



**PARTS &
ACCESSORIES**



**NEW CATALOGUE
INCLUDES MORE THAN 90 NEW PRODUCTS
FOR THE LEAN WORKSHOP!!**

THERE HAS NEVER BEEN A BETTER TIME TO BE LEAN

Now more than ever, is the time to add value to your fabrication process with lean solutions from Wilson Xtra®.

We offer a variety of innovative solutions for your lean workshop to help you increase productivity and reduce waste.

The Wilson Xtra® selection of machines and accessories enhance your productivity and keep your tools running smoother, longer.

Xtra Marks the Spot for lean workshop Accessories.

- Hand tools
- Lubricants and Coolants
- Tool Handling and Storage
- Tool Assembly and Alignment
- Punch Press Tooling/Machine accessories
- Press Brake Tooling/Machine accessories
- Laser system accessories



Remove Galling Quickly and Easily

Galling (material build-up on the sides of the punch) is a troublesome problem which causes premature tool wear and poor quality parts. Now available from Wilson Xtra: rubberised abrasive wheels for your off-hand grinder. Simply hold the sides of the punch tip to the spinning wheel with light pressure to quickly remove all material build-up. This is the same method we use when cleaning up and sharpening punches for our customers.



Prevent Back Injury, Avoid Accidents and Improve Productivity

Safety first in Lean Production! Non-Slip Panel Grips are ideal to help you safely lift and carry sheet materials.

Save time with well-organized tooling cabinets and workshop trolleys

Workshop storage systems from Wilson Tool are designed with the Lean workshop in mind. Storage cabinets and transport trolleys are tailored to suit your specific punch press and press brake tooling styles, so your tooling is easy to find and protected from damage.



Not your average Trumpf style cartridge

Enhance your punch press productivity with new Trumpf® style tool cartridges from Wilson Tool. Designed for durability and performance, the Wilson Tool Trumpf® style cartridge is constructed of 6061 T6 aluminum — a lightweight, yet highly durable alternative to plastic or steel cartridges.



Increase your speed and accuracy

The magnetic Squaring Arm from Wilson Tool is a flexible tool enabling you to get more parts through your press brake with higher accuracy.



Check your Laser lenses for dirt and defects

The HOL.MA® - dirt and strain viewer allows you to see immediately if your laser lens is defective or only dirty. Dirty lenses can be cleaned, saving you time and money by only replacing defective lenses.

Contents

Hand Tools.....	1
Lubricants and Coolants.....	6
X-Cel Lubricant.....	6
X-Cel Tap Lubricant.....	6
Tap Drive Lubricant.....	7
Punch Lubricant.....	7
X-Sharp Coolant.....	7
Tool Handling and Storage.....	8
Vertical Storage Cabinets.....	8
Drawer Inserts.....	14
Tool Transport Units.....	23
Tool Assembly and Alignment.....	26
Assembly Fixtures.....	26
Alignment Fixtures.....	27
Punch Press Tooling Accessories...28	
T-Handle Extractor.....	28
Zip-Mar Adhesive Disks.....	28
Slug Ejectors.....	28
Turret Die Shims.....	29
Trumpf Die Shims.....	32
Demagnetizer.....	33
X-Sharp Grinder.....	34
X-Sharp Accessories.....	35
Punch Press Machine Accessories.38	
Alignment Tools.....	38
Ball Riding Die and Brush Die.....	39
Clamp Parts.....	40
Trumpf Cartridge.....	41
Trumpf Die Shoe.....	41
Press Brake Tooling Accessories...42	
Express Clamp Torque Wrench Kit.....	42
Urethane Rolls.....	42
Press Brake Machine Accessories.43	
Die Stabilizer.....	43
Back Gauge Stopper Plates / Pads.....	43
Squaring Arm.....	45
Digital Protractor.....	45
Laser System Accessories.....	46
Dirt and Strain Viewer.....	46

Hand Tools



Diamond File

16cm industrial file. Plated with finely selected diamond powder, 120-140 mesh. Can be used on hardened tool steel.

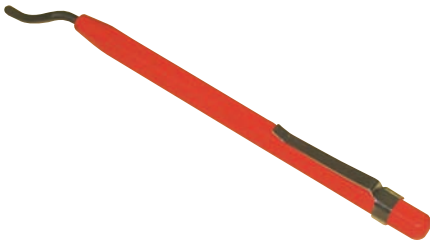
Cat No. **6059**



Diamond Needle File Set - 16cm

150 Grain (medium grade). With tapered handles. Supplied in a PVC wallet. Suitable for light duty and workshop use. Contains hand, half round, three square, round, square and knife.

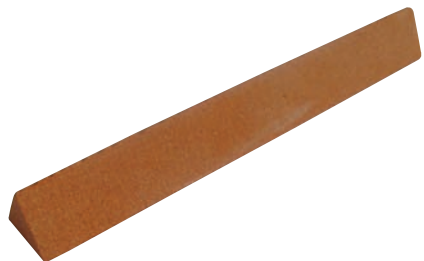
Cat No. **55000**



Mini Burr Sheet Metal Deburring Tool

This tool consists of a B10 universal blade mounted in an 8mm hexagonal aluminium handle. Non-removable blade. Length 140mm. Supplied with pocket clip.

Cat No. **55003**

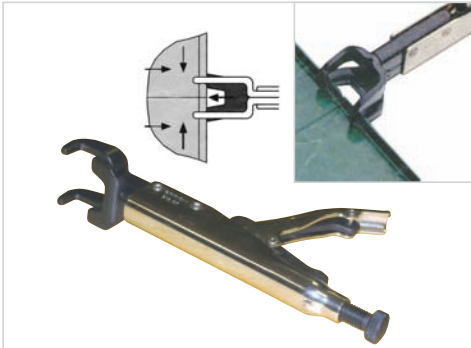


Oil Stone

100mm x 13mm 3 square aluminium oxide sharpening stone.

Cat No. **6060**

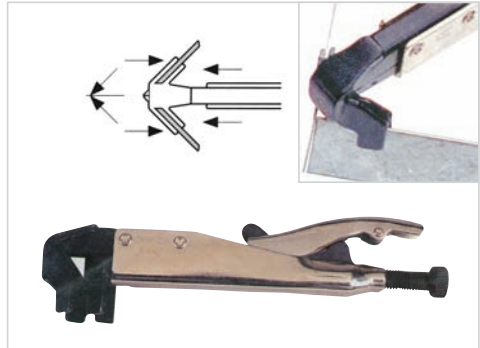
Hand Tools



Butt-Joint Clamp

For auto body repair and steel fabrication. Chrome steel body with narrow profile jaws for confined areas. Straight line jaw motion allows clamping through holes. Push button release for one handed clamp releasing. No provisional (or track) welding required to hold auto body parts for assembly. For clamping two butt joints. Jaw width 45mm. Throat depth 9mm.

Cat No. **55046**



Angle Clamp

Clamps two sheet metal pieces of the same thickness at 90° to one another. Jaw width 50mm. Throat depth 15mm.

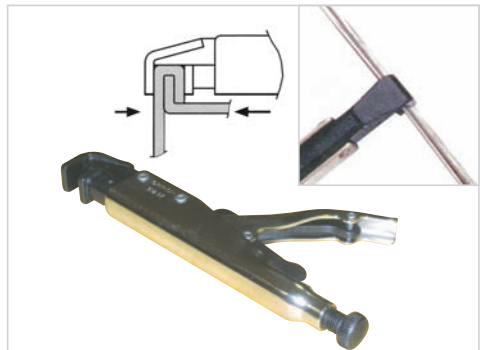
Cat No. **55047**



Lap and Spot Weld Joint Clamp

The 'W' shaped jaw allows four consecutive spot welds without moving the tool. Jaw width 57mm. Throat depth 36mm.

Cat No. **55048**

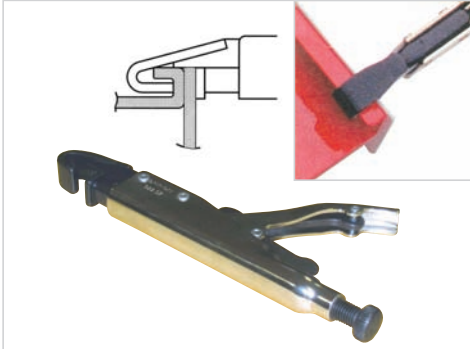


Lap Joint Clamp

Clamps two lap joints. Jaw width 18mm.

Cat No. **55049**

Hand Tools



Flanged Lap Joint Clamp

Clamps two flanged adjacent joints.
Jaw width 18mm. Throat depth 7mm.

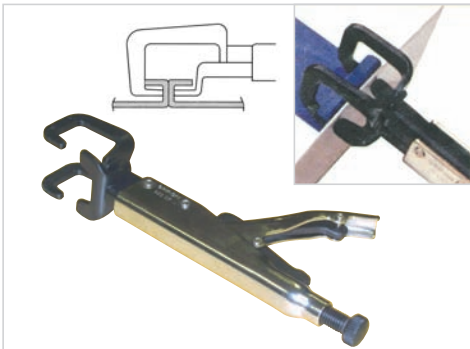
Cat No. **55050**



9mm Hex Nut Driver

Selected for assembly / disassembly of your Form tool die bases, for general maintenance and upkeep.

Cat No. **55266**



Flanged Lap and Adjacent Joint Clamp

Clamps two flanged and adjacent joints.
Jaw width 45mm. Throat depth 25mm.

Cat No. **55051**



Spanner Wrench

Adjustable 'c' hook wrench for removing B Station Thick Turret and 1/4" Station Thin Turret/Strippit punch heads.

Cat No. **6058**

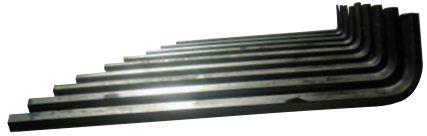
Hand Tools



Tru-Arc Pliers

Retaining ring pliers for changing Old Style B Station Thick Turret strippers and Old Style 5/8" Drop-In strippers.

Cat No. **6056**



Metric Hex Key Wrench Set

Metric 9 piece long arm set. Contains 1.5x77, 2x83, 2.5x90, 3x98, 4x106, 5x118, 6x137, 8x156, and 10x170mm.

Cat No. **24307**

SAE Hex Key Wrench Set

Imperial 13 piece set. Contains .050", 1/16", 5/64", 3/32", 7/64", 1/8", 9/64", 5/32", 3/16", 7/32", 1/4", 5/16" and 3/8".

Cat No. **6057**



Soft Face Hammer

Polyurethane dead-blow hammer. Inside hammer head are steel pellets which impact a split second after the hammer face, reducing rebound.

Cat No. **6106**



Rubberized Abrasive Wheel

100mm diameter by 25mm wide rubberized abrasive wheel for removing galling (material build-up) from punches. Attach to an off-hand grinder (with 25mm arbour), then hold the punch tip to the wheel to remove galling.

Cat No. **55123**

Hand Tools



Sure Shot Sprayer

Pressurized air spray can, suitable for applying bulk chemicals (e.g. sheet lubricants). 950ml maximum liquid capacity.

Cat No. **6120**



Non-slip panel grips

Non-slip panel grips to help you safely lift and carry sheet materials. Sold in pairs and with a lightweight aluminium construction to lift up to 100Kg (220lbs). Holds sheets from 0 to 80mm thick.

Cat No. **55124**



Tool Kit

The Tool Kit consists of the following:

- (1) Tool Box
- (1) Oil Stone
- (1) Diamond File
- (1) Tru-Arc Pliers
- (1) Spanner Wrench
- (1) Punch Lubricant
- (1) Soft Face Hammer
- (1) Metric Hex Key Wrench Set
- (1) Hex Key Wrench Set (Imperial)
- (1) Assortment of 4 sizes of Square Urethane Ejectors

The pressurised air spray can is an inexpensive way to apply bulk chemicals like penetrating oils, solvents and lubricants. (950ml maximum liquid capacity)

Cat No. **6091**

Lubricants and Coolants



Wilson X-Cel Sheet Lubricant

Wilson Tool X-Cel is a Shell developed synthetic, high quality lubricant used for sheet metal nibbling, shearing and forming operations. Dissolved in water, X-Cel makes a solution with high resistance to bacterial degradation and keeps tool systems and exposed parts of the machines clean and lubricated.

Benefits of using Wilson X-Cel Sheet Lubricant:

- Increased tool life
- Easier stripping
- Reduced sheet marking on forming operations
- Non-hazardous in diluted form
- Not explosive or flammable

Physical Characteristics

- Chlorine free
- Hexahydrotriazine free
- Secondary amine free
- Mineral oil free
- Dissolves and disperses quickly in water

X-Cel 1Ltr Spray

Pre-diluted Wilson X-Cel lubricant in a 1 litre, ready-to-use trigger spray.

Cat No. **24315**

X-Cel 5Ltr Concentrate

Wilson X-Cel lubricant supplied as a concentrate in a 5 litre bottle. The recommended normal dilution ratio is 1:10 with water for most operations. Wilson X-Cel has a natural tendency to dissolve and disperse quickly in water when a solution is prepared whether manually or by a blending device. Preparing a solution is also possible using suitable mixing devices (ventury or volumetric type). An evaluation of the concentration of a mix is easily carried out by a refractometer.

Cat No. **24316**



Punch Lubricant

For lubricating punch and guide assemblies.

Cat No. **6055**

Lubricants and Coolants



X-Cel Tapping Lubricant Fe

X-Cel Tapping Lubricant Fe is a neat, extreme-pressure machine tool lubricant developed for thread forming on mild steel, stainless steel and high alloyed steels. To be used in the oil reservoir of your Trumpf machine for tapping applications.

Description	Cat. No.	Price
5Ltr Jerry Can	55262	

X-Cel Tapping Lubricant Al

X-Cel Tapping Lubricant Al is a neat, extreme-pressure machine tool lubricant developed for thread forming on aluminium alloy, copper, brass and non ferrous materials.

Description	Cat. No.	Price
5Ltr Jerry Can	55264	

X-Drive Grease 400g cartridge

X-Drive Grease lubricant is a very high performance grease for the lubrication of tapping tool gears.

Cat No. **55270**



X-Sharp 20Ltr Coolant

X-Sharp coolant is a fully synthetic water extendable solution suitable for cemented carbide tool grinding of a variety of materials. X-Sharp coolant is extremely low foaming, has excellent resistance to bacterial attack and contains additives to minimise the sticky deposits often associated with fully synthetic formulations. X-Sharp coolant has a natural tendency to dissolve quickly in water when a solution is prepared whether manually or by a blending device.

Recommended Concentrations:
Tool grinding: 3 - 5%

Cat No. **55222**

Tool Handling and Storage



► Xtreme Storage Solutions

► The Wilson tool cabinet XSC guarantees maximum organisation with minimum space requirements. Thanks to vertical drawers, the tools are always ready to hand.

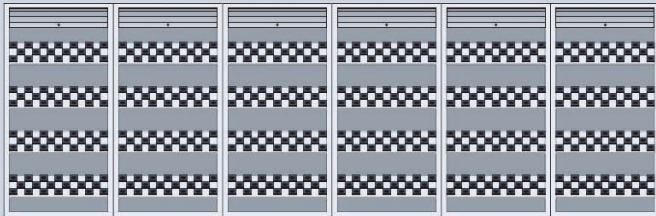
Direct access from both sides provides increased safety as reaching over tools becomes needless.

Perfectly tailored fittings ensure protective storage with an optimum use of space.

Maximum payload of up to 4,500 kg per cabinet (up to 900 kg per drawer) thanks to extremely robust plastic rollers.

Transport notches for lift trucks or carts enable quick transport when empty.

┌ 80 x B stn ─┘ ┌ 80 x B stn ─┘ ┌ 80 x B stn ─┘ ┌ 80 x B stn ─┘ ┌ 80 x B stn ─┘ ┌ 80 x B stn ─┘



6.000 mm

┌ 480 x B stn ─┘



┌ 1.040 mm ─┘

► Save time, space and money!

The Wilson Tool XSC series storage cabinets are designed to minimize the space taken to store your punch press tools, press brake tools and other workshop equipment. The example above shows how an XSC 512 storage cabinet requires only 1/6 of the space of conventional tool storage systems such as open tool racks, wing-door cabinets or roll cabinets. Up to 480 B-Station tools can be stored in a footprint approximately 1m².

In addition, XSC storage cabinets are designed to store your tools safely and productively. Drawer inserts are designed to suit specific tool types, protecting your tools and allowing you to store them in an ordered fashion to reduce tool access time and improve workshop efficiency. Vertical drawers can also be accessed from both sides, preventing over-reach for safe tool access.

Tool Handling and Storage

Xtreme Storage Cabinet*



XSC 311

Narrow width, standard height cabinet. Can be configured to suit your specific needs using drawer inserts on pages 14 to 22. Note: not compatible with press brake drawer inserts XDI 103 (Cat. No. 55142) and XDI 402 (Cat. No. 55209)



XSC 511

Standard width, standard height cabinet. Can be configured to suit your specific needs using drawer inserts on pages 14 to 22. Note: not compatible with drawer inserts XDI 103 (Cat. No. 55142) and XDI 402 (Cat. No. 55209).



XSC 512

Standard width, extra height cabinet. Can be configured to suit your specific needs using drawer inserts on pages 14 to 22. Note: not compatible with drawer inserts XDI 103 (Cat. No. 55142) and XDI 402 (Cat. No. 55209).

XSC 521

Standard width, standard height, special depth cabinet, designed to hold longer press brake tools (capacity 33m of bending tools). Can only be used with drawer inserts XDI 103 (Cat. No. 55142) and XDI 402 (Cat. No. 55209).

XSC 522

Standard width, extra height, special depth cabinet, designed to hold longer press brake tools (capacity 33m of bending tools). Can only be used with drawer inserts XDI 103 (Cat. No. 55142) and XDI 402 (Cat. No. 55209).

Xtreme Storage Cabinets (without drawer inserts)

Type	Model	Dimensions	Cat. No.	Price
XSC 311	3 vertical drawers (3x900kg payload)	660w x 1050d x 1240h	55125	
XSC 511	5 vertical drawers (5x900kg payload)	1040w x 1050d x 1240h	55164	
XSC 512	5 vertical drawers (5x900kg payload)	1040w x 1050d x 2140h	55165	
XSC 521	5 vertical drawers (5x900kg payload)	1040w x 1300d x 1240h	55128	
XSC 522	5 vertical drawers (5x900kg payload)	1040w x 1300d x 2140h	55129	



*Special delivery items. Please contact us for delivery price.

Tool Handling and Storage

► Xtreme Storage Cabinet Sets for Turret Style Tooling*

► XSC 511 Set Thick Turret and Wilson High Performance (HP)

XSC 511 storage cabinet (1040w x1050d x 1240h) including the following drawer inserts for Thick Turret Style Tooling.

Type	Description	Quantity	Capacity
XDI 310	A station punch assemblies	2 EA	40 punch assemblies
XDI 311	A station dies	1 EA	80 dies
XDI 312	A station HP (Series 90) punches and dies	1 EA	18 punches, 36 dies, 18 strippers
XDI 313	B station punch assemblies	2 EA	40 punch assemblies
XDI 314	B station dies	2 EA	90 dies
XDI 316	B station HP (Series 90) punches and dies	1 EA	10 punches, 20 dies
XDI 317	C station punch assemblies and dies	2 EA	12 punch assemblies, 13 dies, 13 strippers
XDI 319	C station HP (Series 90) punches and dies	1 EA	13 punches, 13 dies, 13 strippers
XDI 322	D station punch assemblies and dies	2 EA	8 punch assemblies, 8 dies
XDI 324	D station HP (Series 90) punches and dies	1 EA	6 punches, 6 dies, 6 strippers
XDI 326	E station punch assemblies and dies	1 EA	4 punch assemblies, 4 dies
XDI 327	E station HP (Series 90) punches and dies	1 EA	5 punches, 5 dies
XIS 360	Zip-Mar adhesive disks, slug ejectors, shims (4 partition plates)	5 EA	N/A

► Cat No. **55139**

► XSC 511 Set Thick Turret and Amada Style

XSC 511 storage cabinet (1040w x1050d x 1240h) including the following drawer inserts for Thick Turret Style Tooling.

Type	Description	Quantity	Capacity
XDI 310	A station punch assemblies	2 EA	40 punch assemblies
XDI 311	A station dies	1 EA	80 dies
XDI 313	B station punch assemblies	2 EA	40 punch assemblies
XDI 314	B station dies	2 EA	90 dies
XDI 317	C station punch assemblies and dies	1 EA	6 punch assemblies, 6 dies
XDI 320	C station Amada style punches and dies	1 EA	12 punches, 12 dies, 12 strippers
XDI 322	D station punch assemblies and dies	2 EA	8 punch assemblies, 8 dies
XDI 325	D station Amada style punches, dies and strippers	1 EA	5 punches, 5 dies, 5 strippers
XDI 326	E station punch assemblies and dies	1 EA	4 punches, 4 dies
XDI 328	E station Amada style punches, dies and strippers	1 EA	4 punches, 4 dies, 4 strippers
XIS 360	Zip-Mar adhesive disks, slug ejectors, shims (4 partition plates)	5 EA	N/A

► Cat No. **55140**

*Special delivery items. Please contact us for delivery price.

www.wilsontool.com



Tool Handling and Storage

► Xtreme Storage Cabinet Sets for Trumpf Style Tooling*



XSC 311 Set Trumpf

XSC 311 storage cabinet (660w x1050d x 1240h) including the following drawer inserts for Trumpf Style Tooling.

Type	Description	Quantity	Capacity
XDI 210	Punches size 1 and 2 (with or without collar)	3 EA	240 punches max
XDI 211	Dies size 1	4 EA	160 punches
XDI 212	Dies size 2 and strippers	3 EA	30 sets
XDI 213	Strippers	3 EA	120 strippers
XDI 214	Special and forming tools	1 EA	4 full sets
XDI 215	Cartridge assemblies (equipped or unequipped)	1 EA	5 cartridges
XIS 230	Punches size 0, collars (4 partition plates)	2 EA	
XIS 231	Parting / slitting blades	1 EA	

► Cat No. **55135**

*Special delivery items. Please contact us for delivery price.

Tool Handling and Storage

Punching - Trumpf Style Set*

XSC 511 Set Trumpf

XSC 511 storage cabinet (1040w x1050d x 1240h) including the following drawer inserts for Trumpf Style Tooling.

Type	Description	Quantity	Capacity
XDI 210	Punches size 1 and 2 (with or without collar)	4 EA	320 punches max
XDI 211	Dies size 1	4 EA	160 dies max
XDI 212	Dies size 2 and strippers	4 EA	40 sets max
XDI 213	Strippers	4 EA	160 strippers max
XDI 214	Special and forming tools	2 EA	8 full sets max
XDI 215	Cartridge assemblies (equipped or unequipped)	2 EA	10 cartridges max
XIS 230	Punches size 0, collars (4 partition plates)	3 EA	
XIS 231	Parting / slitting blades	2 EA	

Cat No. **55136**

XSC 511 Set Trumpf Plus

XSC 511 storage cabinet (1040w x1050d x 1240h) including the following drawer inserts for Trumpf Style Tooling.

Type	Description	Quantity	Capacity
XDI 210	Punches size 1 and 2 (with or without collar)	4 EA	320 punches max
XDI 211	Dies size 1	6 EA	240 dies
XDI 212	Dies size 2 and strippers	5 EA	50 sets
XDI 213	Strippers	5 EA	200 strippers
XDI 214	Special and forming tools	3 EA	12 full sets
XDI 215	Cartridge assemblies (equipped or unequipped)	2 EA	10 cartridges
XIS 230	Punches size 0, collars (4 partition plates)	3 EA	
XIS 231	Parting / slitting blades	2 EA	

Cat No. **55137**

XSC 512 Set Trumpf

XSC 512 storage cabinet (1040w x1050d x 2140h) including the following drawer inserts for Trumpf Style Tooling.

Type	Description	Quantity	Capacity
XDI 210	Punches size 1 and 2 (with or without collar)	6 EA	480 punches max
XDI 211	Dies size 1	6 EA	240 dies
XDI 212	Dies size 2 and strippers	5 EA	50 sets
XDI 213	Strippers	5 EA	200 strippers
XDI 214	Special and forming tools	4 EA	16 full sets
XDI 215	Cartridge assemblies (equipped or unequipped)	4 EA	20 cartridges

Cat No. **55138**

Tool Handling and Storage

Xtreme Storage Cabinet Sets*



XSC 311 Set Press Brake

XSC 311 storage cabinet (660w x1050d x 1240h) including the following drawer inserts for Press Brake Tooling.

Type	Description	Quantity	Capacity
XDI 102	Press Brake Tools (approx 1.7m of tools)	9 EA	16m of bending tools

Cat No. **55130**

XSC 511 Set Press Brake

XSC 511 storage cabinet (1040w x1050d x 1240h) including the following drawer inserts for Press Brake Tooling.

Type	Description	Quantity	Capacity
XDI 102	Press Brake Tools (approx 1.7m of tools)	15 EA	26m of bending tools

Cat No. **55131**

XSC 512 Set Press Brake

XSC 512 storage cabinet (1040w x1050d x 2140h) including the following drawer inserts for Press Brake Tooling.

Type	Description	Quantity	Capacity
XDI 102	Press Brake Tools (approx 1.7m of tools)	20 EA	34m of bending tools
XDI 401	Tray for storage boxes	10 EA	160 storage boxes, size 7

Cat No. **55132**

Tool Handling and Storage

XSC 521 Set Press Brake

XSC 521 storage cabinet (1040w x1300d x 1240h) including the following drawer inserts for Press Brake Tooling.

Type	Description	Quantity	Capacity
XDI 103	Press Brake Tools (approx 2.2m of tools)	15 EA	33m of bending tools

Cat No. **55133**

XSC 522 Set Press Brake

XSC 522 storage cabinet (1040w x1300d x 2140h) including the following drawer inserts for Press Brake Tooling.

Type	Description	Quantity	Capacity
XDI 103	Press Brake Tools (approx 2.2m of tools)	20 EA	44m of bending tools
XDI 402	Tray for storage boxes	10 EA	160 storage boxes, size 7
XDI 440	Perforated wall	1 EA	

Cat No. **55134**

*Special delivery items. Please contact us for delivery price.

Xtreme Drawer Inserts - For Press Brake Tooling

XDI 102

For approx. 1.7 meters of tools, fits in XSC 311, XSC 511 and XSC 512.

Cat No. **55141**



XDI 103

For approx. 2.2 meters of tools, fits in XSC 521 and XSC 522.

Cat No. **55142**



Tool Handling and Storage

Xtreme Drawer Inserts - for Trumpf Style Tooling

XDI 210

For punches size 1 and 2 with, or without alignment ring, for 20 - 80 pieces max.

Cat No. **55143**



XDI 211

For dies size 1, for 40 pieces max.

Cat No. **55144**



XDI 212

For dies size 2 or alignment collars or strippers, for 10 pieces or 10 sets max.

Cat No. **55145**



XDI 213

For strippers, 40 pieces max.

Cat No. **55146**



XDI 214

For special and forming tools, fitting dies size 1 and 2, forming dies, punches size 0,1 and 2, punch inserts, tapping modules and strippers, 4 full sets max.

Cat No. **55147**



Tool Handling and Storage

Xtreme Drawer Inserts - for Trumpf Style Tooling

XDI 215

For setup cartridges, equipped or unequipped, 5 pieces max.

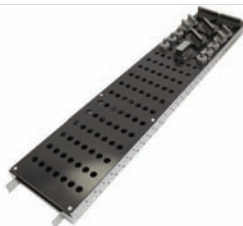
Cat No. **55148**



XDI 216

For Wilson 2-4-1 Punch Inserts, 76 pieces max.

Cat No. **55149**



XDI 217

For Wilson 2-4-1 Die Blades, 60 dies max. (size 1 and 2).

Cat No. **55150**



XIS 230

For Size 0 punches, alignment collars, inserts, including 5 partition plates.

Cat No. **55151**



XIS 231

For Parting and Slitting blades.

Cat No. **55152**



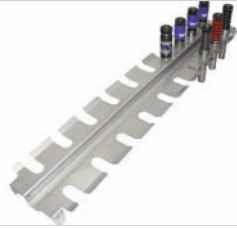
Tool Handling and Storage

Xtreme Drawer Inserts - for Turret Style Tooling

XDI 310

For A station punch assemblies, 20 punch assemblies max.

Cat No. **55153**



XDI 311

For A station dies, 80 dies max.

Cat No. **55154**



XDI 312

For A station HP (Series 90) punches and dies, 18 punches with strippers, 36 dies max.

Cat No. **55155**



XDI 313

For B station punch assemblies, 20 punch assemblies max.

Cat No. **55156**



XDI 314

For B station dies, 45 dies max.

Cat No. **55157**



Tool Handling and Storage

Xtreme Drawer Inserts - for Turret Style Tooling

XDI 315

For B station punch assemblies and dies, 12 punch assemblies and 12 dies max.

Cat No. **55158**



XDI 316

For B station HP (Series 90) punches and dies, 10 punches and 20 dies max.

Cat No. **55159**



XDI 317

For C station punch assemblies and dies, 6 punches and 6 dies max.

Cat No. **55160**



XDI 318

For C station HP (Series 90) punches, 38 punches max.

Cat No. **55161**



XDI 319

For C station HP (Series 90) punches and dies, 13 punches with strippers and 13 dies max.

Cat No. **55196**



Tool Handling and Storage

Xtreme Drawer Inserts - for Turret Style Tooling

XDI 320

For C station Amada style punches, 38 punches max.

Cat No. **55197**



XDI 321

For C station Amada style punches, dies and strippers; 12 punches, 12 dies and 12 strippers max.

Cat No. **55198**



XDI 322

For D station punch assemblies and dies, 4 punches and 4 dies max.

Cat No. **55199**



XDI 323

For D station HP (Series 90) punches, 11 punches max.

Cat No. **55200**



XDI 324

For D station HP (Series 90) punch and dies, 6 punches with strippers and 6 dies max.

Cat No. **55201**



Tool Handling and Storage

Xtreme Drawer Inserts - for Turret Style Tooling

XDI 325

For D station Amada style punches, dies and strippers; 5 punches, 5 dies and 5 strippers max.

Cat No. **55202**



XDI 326

For E station punch assemblies and dies, 4 punches and 4 dies max.

Cat No. **55203**



XDI 327

For E station HP (Series 90) punches and dies, 5 punches, 5 dies and 5 strippers max.

Cat No. **55204**



XDI 328

For E station Amada style punches, dies and strippers; 4 punches, 4 dies and 4 strippers max.

Cat No. **55205**



XIS 360

For Zip-Mar adhesive disks, slug ejectors, shims; including 5 partitions.

Cat No. **55206**



Tool Handling and Storage

Xtreme Drawer Inserts for workshop equipment

XDI 400

Multipurpose tool tray (5 separations sheets),

Cat No. **55207**



XDI 401

Tray for storage boxes; fits in XSC 311, XSC 511 and XSC 512.

Cat No. **55208**



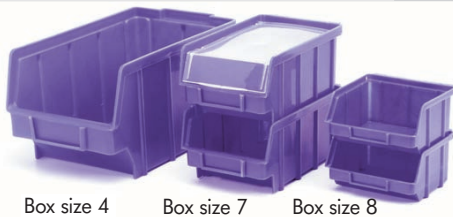
XDI 402

Tray for storage boxes; fits in XSC 521 and XSC 522.

Cat No. **55209**



Storage Boxes and Perforated Walls



Box size 4

Box size 7

Box size 8



Perforated Wall

Type	Description	Capacity	Cat. No.	Price
XSB 210	Box size 8	85 x 105 x 45	55210	
XSB 211	Box size 7	160 x 100 x 75	55211	
XSB 212	Box size 4	350 x 220 x 145	55212	
XDI 213	Perforated wall for XSC 311, XSC 511, XSC 512	910 x 250	55213	
XDI 214	Perforated wall for XSC 311, XSC 511, XSC 512	910 x 895	55214	
XDI 215	Perforated wall for XSC 512	910 x 1795	55215	
XDI 216	Perforated wall for XSC 521, XSC 522	1162 x 895	55216	
XDI 217	Perforated wall for XSC 522	1162 x 1795	55217	



Tool Handling and Storage

Hook Sets for Perforated Walls

XHS 012

Hook Set includes 12 holders for spanners, screw drivers, drills, pliers and various type of tooling.

Cat No. **55257**



XHS 018

Hook Set includes 18 holders for spanners, screw drivers, drills, files, pliers and various type of tooling.

Cat No. **55258**



XHS 028

Hook Set includes 28 holders for spanners, screw drivers, drills, files, pliers and various type of tooling.

Cat No. **55259**



XHS 040

Hook Set includes 40 holders for spanners, screw drivers, drills, files, tubes, pliers and various type of tooling.

Cat No. **55260**



XHS 050

Hook Set includes 50 holders for spanners, screw drivers, drills, files, tubes, pliers and various type of tooling.

Cat No. **55261**



Tool Handling and Storage

Xtreme Workshop Trolleys*

XWT 580 Basic Trolley

Basic model including 1 drawer, 1 level shelf and 1 rubber mat. Trolley sides have perforated walls for "shadow board" tool storage (compatible with hooks on page 22). Shelves are compatible with all drawer inserts (pages 14 to 21) except XDI 103 and XDI 402.

Colour: blue RAL5002 and grey RAL9006

Total payload: 400 kg

Dimensions (mm): 582w x 922d x 922h

Cat No. **55272**



XWT 581 Press Brake Trolley

Press brake – including 1 drawer, 2 sloped shelves with middle partition and 1 rubber mat. Trolley sides have perforated walls for "shadow board" tool storage (compatible with hooks on page 22).

Colour: blue RAL5002 and grey RAL9006

Total payload: 400 kg

Dimensions (mm): 582w x 922d x 922h

Cat No. **55273**



XWT 582 Press Brake Plus Trolley

Press brake – including 1 drawer, 2 sloped shelves with middle partition and 3 tool carriers. Trolley sides have perforated walls for "shadow board" tool storage (compatible with hooks on page 22).

Colour: blue RAL5002 and grey RAL9006

Total payload: 400 kg

Dimensions (mm): 582w x 922d x 922h

Cat No. **55274**



*Special delivery items. Please contact us for delivery price.

Tool Handling and Storage

Xtreme Workshop Trolleys*

XWT 583 Trumpf Style Trolley

Trumpf style – including 1 drawer, 1 level shelf and 9 tool retainers for cartridge assemblies. Capacity 45 cartridges. Trolley sides have perforated walls for “shadow board” tool storage (compatible with hooks on page 22).

Colour: blue RAL5002 and grey RAL9006
Total payload: 400 kg
Dimensions (mm): 582w x 922d x 922h

Cat No. **55275**



XWT 584 Turret Style Trolley

Turret style – including 1 drawer, 1 level shelf and 3 tool retainers (XDI 315, XDI 317 and XDI 322). Capacity 12x B station punches/dies, 6x C station punches/dies and 4x D station punches/dies. Trolley sides have perforated walls for “shadow board” tool storage (compatible with hooks on page 22).

Colour: blue RAL5002 and grey RAL9006
Total payload: 400 kg
Dimensions (mm): 582w x 922d x 922h

Cat No. **55276**



XWT 585 Parts Storing Trolley

Including 1 drawer, 2 sloped shelves, 3 small shelves, 20 storage boxes of size 4 and 24 storage boxes of size 7. Trolley sides have perforated walls for “shadow board” tool storage (compatible with hooks on page 22).

Colour: blue RAL5002 and grey RAL9006
Total payload: 400 kg
Dimensions (mm): 582w x 922d x 1370h

Cat No. **55277**



*Special delivery items. Please contact us for delivery price.

www.wilsontool.com



Tool Handling and Storage



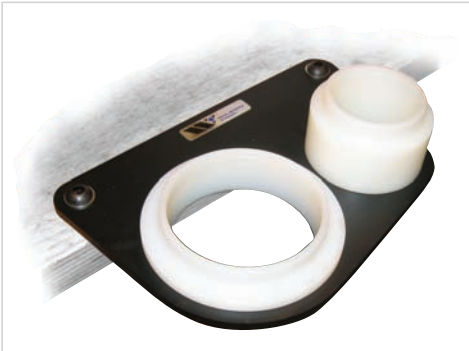
Press Brake Tooling Cabinet*

- Solid steel construction
- Mobile base with heavy duty casters with rated capacity of 408 kilograms each
- Three 177mm drawers capable of holding five punches each
- Two 50.8mm drawers capable of holding five dies each
- Punches are held upright in custom steel U-channels to prevent damage to tips and mounting tongues
- Dies are separated by custom U-channels to prevent damage to V-openings
- Individual latches on all drawers
- Safety interlock to prevent the opening of more than one drawer at a time
- Full width handles with clear end caps and paper labelling strips with clear protective label covers
- Retainer top with rubber mat
- Dimensions (mm): 1067(h) x 1022(w) x 571(d)

Cat No. **90007**

*Special delivery items. Please contact us for delivery price.

Tool Assembly and Alignment



Thick Turret Assembly Fixture C and D Stations

Bench mounted aid for assembling and maintaining C & D Station Thick Turret guide assemblies.

Cat No. **24162**



Thick/Thin Turret and Strippit Nylon Vice Jaws

Tailored vice jaws to aid in the assembly and maintenance of A and B Station Thick Turret and 1 1/4" Station Thin/Strippit style punch assemblies.

Cat No. **24001**



Strippit Style 3 1/2" Assembly Fixture

Bench mounted aid for assembling and maintaining 3 1/2" Strippit style guide assemblies.

Cat No. **24161**



Trumpf Style Assembly Fixture

Bench mounted aid for assembling and maintaining 2-4-1 punch assemblies and Trumpf style tooling.

Cat No. **24182**

Tool Assembly and Alignment



Pullmax Style Assembly Fixture

Bench mounted aid for assembling and maintaining Pullmax style tool holders and punch assemblies.

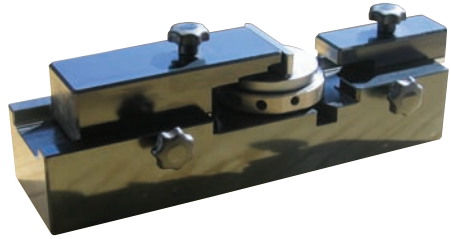
Cat No. **24183**



Spring Disassembly Tool

For use with large station guide assemblies.

Cat No. **8104**



Alignment Fixture For Trumpf Style Tooling

The alternative to the Trumpf Quick Set at a fraction of the cost!

Wilson Tool have designed a simpler setting fixture which is very accurate, very robust, yet extremely portable. The body of the fixture is precision made and durable, due to the fact that there are very few wearable or moveable parts. The fixture is also very versatile and can accommodate many types of Trumpf punches, including Size I, Size II, Minimatic style, Heavy Duty, Manual, plus those forming tools which do not have integral collars. The fixture can also be used with flat or shear punches. It is very easy to use and comes with accessories including a regrind length chart.

The quick and easy solution for setting up your Trumpf punches from Wilson Tool.

Cat No. **24186**

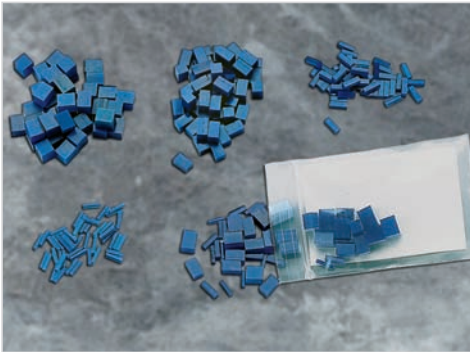
Punch Press Tooling Accessories



T-Handle Extractor

For large station guide assemblies.

Cat No. **6483**



Slug Ejectors

Hole Dia. In Punch	Qty	Cat. No.	Price
3.2mm	50	6116	
4.8mm	50	6117	
9.5mm	50	6118	
12.7mm	50	6119	
Assortment	50	6410	

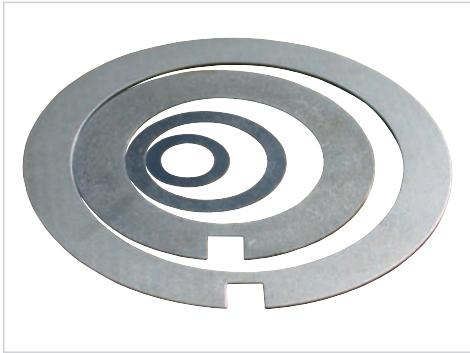


Zip-Mar™ Adhesive Disks

Zip Mar™ reduces the costly marring of material by the stripper. The disk is applied to the bottom of a standard stripping guide or stripper plate. A hole is then cut with a sharp knife to reveal the existing hole in the stripper.

Station	Qty	Cat.No.	Price
12.7mm (A)	pk(10)	6083	
31.75mm (B)	pk(10)	6084	
50.8mm (C)	pk(10)	6085	
88.9mm (D)	pk(10)	6086	
114.3mm (E)	pk(10)	6087	
15.2 x 30.5cm Sheet	1	6108	

Punch Press Tooling Accessories



Thin Turret/Strippit/FAB Die Shims

1-1/4" Station

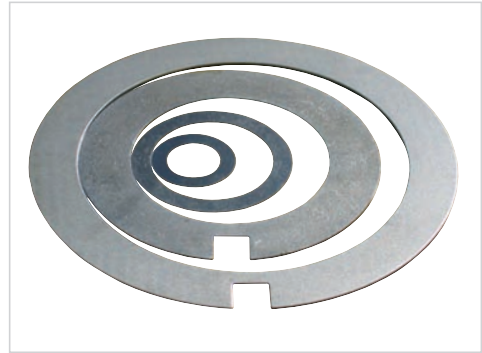
Thickness (mm)	Qty	Cat. No.	Price
0.25	1	2097	
0.25	25	2209	
0.75	1	2723	
0.75	25	2724	
1.5	1	2100	
1.5	25	2173	

3-1/2" Station

Thickness (mm)	Qty	Cat. No.	Price
0.25	1	2081	
0.25	5	2211	
0.75	1	2727	
0.75	5	2728	
1.5	1	2084	
1.5	5	2175	

3-1/2" 8 Station MT

Thickness (mm)	Qty	Cat. No.	Price
0.76	1	6200	
0.25	1	6199	
0.25	15	6813	
0.75	15	6814	



Thick Turret Die Shims

A Station Die

Thickness (mm)	Qty	Cat. No.	Price
0.25	1	2101	
0.25	25	2208	
0.75	1	2721	
0.75	25	2722	
1.5	1	2104	
1.5	25	2172	

B Station Die

Thickness (mm)	Qty	Cat. No.	Price
0.25	1	2097	
0.25	25	2209	
0.75	1	2723	
0.75	25	2724	
1.5	1	2100	
1.5	25	2173	

C Station Die

Thickness (mm)	Qty	Cat. No.	Price
0.25	1	2089	
0.25	10	2210	
0.75	1	2725	
0.75	10	2726	
1.5	1	2092	
1.5	10	2174	

Punch Press Tooling Accessories

Thick Turret Die Shims cont.			
DuraDie – Standard C Station			
Package Description	Cat. No.	Price	
2x1mm, 2x0.5mm, 1x0.4mm, 1x0.3mm, 2x0.1mm	12995		
DuraDie – Heavy Duty C Station			
Package Description	Cat. No.	Price	
2x1mm, 2x0.5mm, 1x0.4mm, 1x0.3mm, 2x0.1mm	12994		
D Station			
Thickness (mm)	Qty	Cat. No.	Price
0.25	1	2081	
0.25	5	2211	
0.75	1	2727	
0.75	5	2728	
1.5	1	2084	
1.5	5	2175	
DuraDie – Standard D Station			
Package Description	Cat. No.	Price	
2x1mm, 2x0.5mm, 1x0.4mm, 1x0.3mm, 2x0.1mm	13012		
DuraDie – Heavy Duty D Station			
Package Description	Cat. No.	Price	
2x1mm, 2x0.5mm, 1x0.4mm, 1x0.3mm, 2x0.1mm	13011		

Thick Turret Die Shims cont.			
E Station			
Thickness (mm)	Qty	Cat. No.	Price
0.25	1	2073	
0.25	5	2212	
0.75	1	2729	
0.75	5	2730	
1.5	1	2076	
1.5	5	2176	
DuraDie – Standard E Station			
Package Description	Cat. No.	Price	
2x1mm, 2x0.5mm, 1x0.4mm, 1x0.3mm, 2x0.1mm	13017		
DuraDie – Heavy Duty E Station			
Package Description	Cat. No.	Price	
2x1mm, 2x0.5mm, 1x0.4mm, 1x0.3mm, 2x0.1mm	13020		
Finn-Power Multi-Tool Die Shims MT 12 and 20 – 8 (ROUND)			
Thickness (mm)	Qty	Cat. No.	Price
0.25	1	6802	
0.25	15	6817	
0.76	1	6803	
0.76	15	6818	
MT 12 and 20 – 8 (SHAPE)			
Thickness (mm)	Qty	Cat. No.	Price
0.25	1	6804	
0.25	15	6819	
0.76	1	6805	
0.76	15	6820	

Punch Press Tooling Accessories

Thick Turret Die Shims cont.

MT 6 and 10 – 16

Thickness (mm)	Qty	Cat. No.	Price
0.25	1	6806	
0.25	15	6821	
0.25	1	6807	
0.25	15	6822	

MT 6 and 8 – 24

Thickness (mm)	Qty	Cat. No.	Price
0.25	1	6808	
0.25	15	6823	
0.76	1	6809	
0.76	15	6824	

Thick 1-1/4" MT 5

Thickness (mm)	Qty	Cat. No.	Price
0.25	1	6810	
0.76	1	6811	

MT 8i-16

Thickness (mm)	Qty	Cat. No.	Price
0.25	1	6800	
0.25	15	6815	
0.76	1	6801	
0.76	15	6816	



Trumpf Size 1 and 2 Die Shims

Size 1 Die

Station	Qty	Cat. No.	Price
0.1	1	25299	
0.3	1	25300	
Pack Description		Cat. No.	Price
2x0.1mm, 1x0.3mm, 1x0.5mm		25181	
2x0.1mm, 1x0.3mm, 2x0.5mm		62023	

Size 2 Die

Station	Qty	Cat. No.	Price
0.1	1	25296	
0.3	1	25297	
0.5	1	25298	
Pack Description		Cat. No.	Price
2x0.1mm, 1x0.3mm, 2x0.5mm		25182	
2x0.1mm, 1x0.3mm, 2x0.5mm		62024	

Punch Press Tooling Accessories

Trumpf Size 2·4·1 Die Blade Shims

241 Die Blade – 0-40mm

Package Description	Cat. No.	Price
1x1mm, 2x0.5mm, 1x0.4mm, 1x0.3mm, 2x 0.1mm	25983	

241 Die Blade – 40-56mm

Package Description	Cat. No.	Price
1x1mm, 2x0.5mm, 1x 0.4mm, 1x0.3mm, 2x 0.1mm	25984	

241 Die Blade – 40-56mm – Heavy Duty

Package Description	Cat. No.	Price
1x1mm, 2x0.5mm, 1x 0.4mm, 1x0.3mm, 2x 0.1mm	25992-S	

Trumpf Multi-Tool Die Shims

4 station Multi-Tool Die

Package Description	Cat. No.	Price
2x0.1mm, 1x0.3mm, 1x0.5mm	25389	

5 station Multi-Tool Die

Package Description	Cat. No.	Price
2x0.1mm, 1x0.3mm, 1x0.5mm	26003	

6 station Multi-Tool Die

Package Description	Cat. No.	Price
2x0.1mm, 1x0.3mm 2x0.5mm	25388	

10 station Multi-Tool Die

Package Description	Cat. No.	Price
2x0.1mm 1x0.3mm, 1x 0.5mm	25995	

Trumpf Slitting/Parting Tool Die Shims

Slitting Tool Die – 2 Piece Die Blade

Thickness (mm)	Qty	Cat. No.	Price
0.3mm	1	25185	

Parting Tool Sizes 30 x 5mm and 56 x 5mm Die – 1 Piece Die Blade

Package Description	Cat. No.	Price
1x0.5mm, 1x0.3mm, 1x0.2mm	25439	

Punch Press Tooling Accessories

▶ Trumpf Brushed Die Shims		
▶ 10mm Brush Insert		
Package Description	Cat. No.	Price
1x0.1mm, 1x0.3mm	25927	
▶ 15mm Brush Insert		
Package Description	Cat. No.	Price
1x0.1mm, 1x0.3mm	25928	
▶ 24mm Brush Insert		
Package Description	Cat. No.	Price
1x0.1mm, 1x0.3mm	25929	
▶ Ring Brush		
Package Description	Cat. No.	Price
1x1mm, 2x0.5mm, 2x0.1mm	25948	



▶ Demagnetiser

When a punch and die have been re-ground they will retain a certain amount of magnetism after being held by a magnetic chuck. Subsequent operations may necessitate the efficient demagnetising of these parts and the Wilson Tool demagnetiser will prove invaluable for this purpose.

▶ Cat No. **24304**

Punch Press Tooling Accessories



Shear Grinding Fixture

With your large investment in tooling, why not get the most life out of it, and reduce your tooling costs with the finest re-grinding?

The winning combination of the Wilson Tool grinding fixture and a surface grinder gives you not only the advantage of re-sharpening your tools the same way as Wilson Tool, but you also have these advantages:

- Easy to adjust angle setting for shear grinding.
- Ability to resharpen punches without full disassembly of punch assemblies.
- No need to buy a dedicated piece of machinery just for re-sharpening. The surface grinder can be used for many other applications.
- Easy to use instruction sheet with grinding tips.

Cat No. **6034**

For FAB and Thin Turret Tooling

Description	Cat.No.	Price
5/8" Tooling Sleeve Adapter	6046	
B Station Tooling Punch and Die Adapter	6044	
D Station Tooling Punch Holder	6041	
C and D Station Full Body Tooling	6039	
Universal Notch Punch Holder	6071	

For Thick Turret Tooling

Description	Cat. No.	Price
A Station Tooling Sleeve Adapter	6043	
A Station Die Adapter	6088	
B Station Tooling Punch and Die Adapter	6042	
C,D and E Station "Old Style" Punch Holder	6039	
"Series 80/90" Tooling Punch Holder	6040	
C and D Station Die Adapter	24017	
Diamond Holder and Diamond*	24003	
Replacement Diamond for 24003	24004	

*B Station Tooling Adapter Required

For Trumpf Style Tooling

Description	Cat. No.	Price
Punch Holder	6089	
Die, size 1	25365	
Die, size 2	25366	
Multi-Tool Punch (MT-6)**	25303	
Multi-Tool Die (MT-6)**	25305	
Multi-Tool Punch (MT-4)**	25302	
Multi-Tool Die (MT-4)**	25304	
Multi-Tool Punch (MT-5)**	25935	
Multi-Tool Die (MT-5)**	25936	
Pullmax Style Orbit Punch**	62124	
Pullmax Style Orbit Die**	62125	

**Trumpf Punch Adapter Required

Punch Press Tooling Accessories



X-Sharp Grinder

The Wilson X-Sharp grinder is an absolutely unique and innovative automated punch and die grinding machine, designed with the objective of simplifying the process of sharpening punch press tools.

Fully Automated Grinding Process

The regrind process on the X-Sharp is fully automated and can be operated by a user with no grinding experience. After mounting the tool in the chuck, the operator simply selects the tool size and how much to regrind, flicks the toggle switch to close the safety cover and then presses the start button. The operator is then free to return to other production tasks. When sharpening is complete, the machine returns to its original position and switches off.

Precision

The X-Sharp uses an AC-servomotor driving a precision gear and ball screw along with dual linear guides and four carriers to provide highly stable bearing properties. This ensures a high level of precision and an excellent quality of surface finish on your sharpened tools, thus ensuring the maximum return on your investment.



Punch Press Tooling Accessories

Automated Height Detection

The X-Sharp automatically measures the height of any tool mounted in the chuck before the grinding cycle begins. This also means that no manual adjustments are required to compensate for grinding wheel wear.

Shear Grinding

Punches with shears can also be sharpened using the X-Sharp shear grinding chuck.

Coolant

The X-Sharp is equipped with a powerful closed coolant system, ensuring the tool is constantly flooded with coolant during the grinding process. This prevents burning and surface cracking, improving the quality of the grind and helping to maximise your tool life by giving you a factory sharp edge every time.

Frame

The machine has a heavy-duty welded frame, stress relieved prior to machining. This gives the X-Sharp superior frame stability, a fundamental requirement for professional quality grinding.

Interlocking Safety Guard

The X-Sharp is equipped with a pneumatic, interlocking safety guard that opens and closes with a toggle switch. The guard encloses the entire grinding area to protect the health and safety of the operator.

Grinding Space

With a unique design of safety guard, the grinding space on the X-Sharp is easily accessible from three sides. This makes the loading and unloading of tools quick and easy, and allows straightforward access for cleaning.

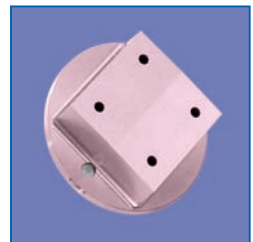
Footprint

The X-Sharp was designed with the smallest footprint in the industry, so the machine can easily be placed next to the punch press. With the automation features of the X-Sharp, the operator can continue to use the punch press while a tool is being sharpened.

Special delivery item.

Please contact us for delivery price.

Contact the sales desk for more information



Punch Press Tooling Accessories



X-Sharp Accessories

Accessory	Description	Cat. No.	Price
Wilson X-Sharp grinding Wheel	High-quality replacement CBN grinding wheel for the X-Sharp grinder.	55109	
Shear Grinding Chuck	For grinding roof-top, or whisper punches. Chuck can be set up to a 15 degree angle by adjusting the setting screws. Including chuck key and spirit level.	55115	
Magnetic Chuck	Circular permanent magnetic chuck.	55121	
MT3Ri Grind Adapter	X-Sharp regrind fixture for the 3-station MT3Ri dies.	24402	
MT8Ri Grind Adapter	X-Sharp regrind fixture for 10-station MT10Ri dies.	6812	
Dressing Stone	For dressing CBN wheels on cylindrical grinding machines.	55117	

Punch Press Machine Accessories



**Alignment Tools for Amada®
Single Track Machines**

Station	Upper Unit		Lower Unit	
	Cat.No.	Price	Cat.No.	Price
12.7mm (A)	2597		2598	
31.75mm (B)	2599		2600	



**Alignment Tools for Amada®
Multiple Track Machines**

*NOTE: Two of each Cat. No. required

Station	Cat. No.	Price
12.7mm (A)	2601*	
31.75mm (B)	2602*	



Alignment Tools

Station	Upper Unit		Lower Unit	
	Cat.No.	Price	Cat.No.	Price
50.8mm (C)	1840		1841	
88.9mm (D)	1947		1948	
114.3mm (E)	1949		1950	
152.4mm (F)	2290		2291	

In order to align A and B Stations, you need one or two tools for each station size, depending on the type of machine. For a single track turret, one tool is required to align each station. For a multiple track machine, two tools are required to align each station (one in the front of the station and one in the back).

Punch Press Machine Accessories



Ball Riding Die

The "Ball Riding Die" which consists of a spring loaded ball, has been designed to help eliminate several problems. The most common problems result from the higher height of the form-up dies.

These problems are:

- Sheet hang-up from the material running into a higher die, such as a forming tool.
- Sheet deformation from punching next to dies of different heights.
- Damage to forming die inserts when the die cap receives uneven loading during punching in neighbouring stations.

To reduce sheet and tool damage in forming applications, two of these dies are placed in stations surrounding the forming tool. When the sheet approaches the form-up die, it is lifted by the ball riding die. When the forming operation begins, the ball in the surrounding die recesses with the sheet. Once the form has been achieved and the tool strips, the spring loaded balls lift the sheet back to its original height. This allows the sheet to move more freely through the turret, avoiding collisions with the form-up tool.

Placing these dies into the vacant stations on a turret loaded on one side can also eliminate material crashes.

Station	Cat. No.	Price
12.7mm (A)	2375	
31.75mm (B)	482	
50.8mm (C)	101801	
88.9mm (D)	101802	



Brush Die

The primary use for brush die is in applications where any marking that might be caused by ball riding dies is not acceptable

Station	Cat. No.	Price
12.7mm (A)	2760	
31.75mm (B)	2761	
50.8mm (C)	2762	
88.9mm (D)	2763	
114.3mm (E)	2764	

Punch Press Machine Accessories



Wilson Xtra Clamp Parts

You've always been able to depend on Wilson Tool for innovative, precision engineered tooling for your punch press and press brake machines. Now through Wilson Xtra, you can buy replacement Clamp Assemblies and Turret Keys for your turret punch press machine. Both are high quality, competitively priced alternatives with the following list of features and benefits:

- All clamp assemblies feature replaceable cylinders. Never again will you have to throw away a complete assembly for the sake of a worn out cylinder.
- All lower clamp and jaw assemblies are designed to be of the same size and shape of the original equipment.
- All clamps and keys meet or exceed original equipment manufacturers specifications.
- When possible, modular, replaceable clamp bases are used.
- Where possible, clamp assemblies feature a coarse gripping groove on the clamp plate as opposed to the fine groove found on other clamps.
- When applicable, fasteners are included with parts and assemblies at no additional charge.
- Improved clamping is achieved through the use of 45 degree grooves on the clamp plate and clasper as opposed to straight line grooves.

Contact Wilson Tool now for your copy of our new Wilson Xtra Clamp Parts catalogue.

Punch Press Machine Accessories



▶ Wilson Trumpf® Style Cartridge

- ▶ Enhance your punch press productivity with new Trumpf® style tool cartridges from Wilson Tool. Designed for strength and performance, the Wilson Tool Trumpf® style cartridge* is constructed of 6061 T6 aluminium - a strong yet lightweight alternative to plastic or steel cartridges. Wilson Cartridges also have a hard anodised finish for improved wear protection and scratch resistance.

*patent pending

Description	Cat. No.	Price
Trumpf Style Tool Cartridge Full Assembly excluding Die Shoe	26222	
Trumpf Style Die Shoe Assembly	26215	

Press Brake Tooling Accessories



Express Clamp Torque Wrench Kit

Component	Cat. No.	Price
Complete Kit	8002	
Case	8003	
Pivots	43726	
Wrench	6793	
Hex Tips	6795	



Urethane Rolls

Urethane Rolls for mark-free bending. Urethane dies are also available. Contact the sales desk for prices and lead times.

Dimensions	Cat. No.	Price
0.4 x 152mm x 30m	42530	
0.8 x 152mm x 30m	42531	

Press Brake Machine Accessories



Side Gauge

Intended for use with Quick Change, 2V, Sectionalized 2V and Quick Change 1V dies.

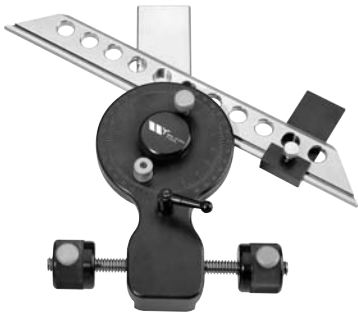
Cat No. **42701**



1V Die Stabilizer

Fits to guide rail to support short sections of Quick Change 1V dies.

Cat No. **42704**



Side Gauge and Protractor Assembly

Locates on V for setting variable forming angles. Includes case.

Cat No. **42702**



2V Die Stabilizer

Fits to guide rail to support short sections of Quick Change 2V dies.

Cat No. **42705**

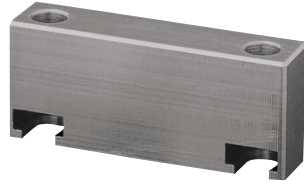
Press Brake Machine Accessories



Adjustable Back Gauge Stopper Plate

For non-CNC machines. For use on the 'Amada NC9EX back gauge system'. Helpful in conjunction with side gauge and protractor. (See product on page 39, Cat No. 42702.)

Cat No. **42703**



Reworkable Pad

Machinable stopper pad for parts that interfere with your standard stopper pads. Designed for use on the 'Amada NC9EX back gauge system'.

Cat No. **42712**



Replaces Original Pad

Replacement stopper pad with added quick change feature for faster machine set-up. Designed for use on the 'Amada NC9EX back gauge system'.

Cat No. **42707**



Sheet Support Pad

Helps stabilize parts made out of thin material or parts with a very long flange. Simply rest the end of your flange on the corner of the L-shaped back gauge pad and it will help support your part while you are bending. Designed for use on the 'Amada NC9EX back gauge system'.

Cat No. **42708**

Press Brake Machine Accessories

Digital Protractor

Lightweight, easy-to-use, highly accurate protractors measure angles from 0 to 360 degrees with digital precision.

Features include:

- Accuracy: +/- 0.1 degrees
- Digital precision from 0 to 360 degrees
- Set angles in 0.05 degree increments
- Strong magnets on all four edge surfaces
- Front locking lever to hold the arm position while transferring measurements
- A hold function, ensuring you never lose your reading and a reverse reading capability for those hard to calculate angles.

Description	Cat. No	Price
Digital Protractor measuring 101.6mm (4")	972632	
Digital Protractor measuring 203.2mm (8")	972633	
Digital Protractor measuring 304.8mm (12")	972634	
Protractor Set Including 101.6mm (4"), 203.2mm (8") and 304.8mm (12")	972635	



Single Point Pad

For use on a sheet that has been nibbled, scalloped or has an irregular shape. Gives minimal contact with the edge of the sheet to help provide a single point of reference on an irregular shape. Designed for use on the 'Amada NC9EX back gauge system'.

Cat No. **42709**



Squaring Arm

The magnetic squaring arm attaches to any die with a vertical surface, and can be adjusted to any angle from 0 to 90 degrees to locate parts in the bending process. Designed to get more parts through your press brake with higher accuracy.

Description	Cat. No.	Price
Right Hand	47000	
Left Hand	47001	

Laser Systems Accessories



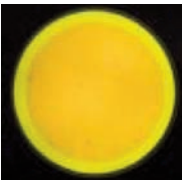
HOL.MA.® Dirt and strain viewer and cleaning set

The Hol.Ma.® Dirt & Strain Viewer and Cleaning Set kit is designed to allow you to check and clean laser lenses, ensuring that you are only replacing defective lenses.

Lenses are initially mounted in the viewer to check if a lens is dirty. Is there backscatter on the lens? Where exactly is it? If it is near the edge and not in the centre, the lens can sometimes still be used to cut aluminium.

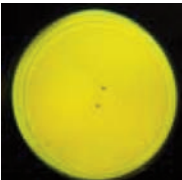
Following the initial inspection, a polariser is added to the viewer to check if the lens has overheated (stress). This cannot be seen with the naked eye.

Finally, dirty lenses can be cleaned using the included ultrasonic appliance.



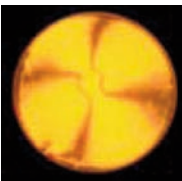
Example Lens 1

The Dirt & Strain Viewer clearly shows that this lens is dirty.



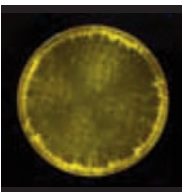
Example Lens 2

Here are two small pieces of backscatter in the very centre of this lens.



Example Lens 3

The Dirt & Strain Viewer shows that this example lens is overheated (stress), which cannot be seen with the naked eye. This problem mainly occurs with lasers with a power of 4, 5, 6 or 7KW.



Example Lens 4

The bright spots at the edge of the lens show that the lens was mounted too tightly in the holder. This has occurred because the holder was dirty or was screwed in too tightly. The lens consists of a soft material, so any strain on the lens can lead to problems finding the focussing point, putting the lens under stress. The Dirt & Strain Viewer allows you to see the stress in the middle of the lens (shadow - cross) that is not visible to the naked eye. Without the Dirt & Strain Viewer you would not be able to see the cause of stressed lenses, and every new lens mounted in the holder would become damaged.

Laser Systems Accessories



Holma® Dirt and strain viewer and cleaning set

The case includes:

- 1 dirt and strain viewer
- 1 mount for 38.1mm lenses
- 1 mount for 50.8mm lenses
- 1 box latex examination gloves with 100 pieces
- 1 dust blower
- 1 100ml pipette bottle (for applying acetone to clean lenses) Note: kit contains no acetone.
- 2 lens cleaning and polishing cloths 45x45cm, in 100% cotton
- 1 pack of lens cleaning paper, 50 sheets)
- 1 ultrasonic cleaning appliance including plastic basket and cleaning liquid
- 1 detailed operating instructions

Cat No. **55278**

Cleaning Set Consumables

Description	Cat No.	Price
Latex examination gloves	55279	
Dust blower	55280	
100ml pipette bottle (without acetone)	55281	
100% cotton lens cloth 45 x 45 (pair)	55282	
Lens cleaning paper, 50 sheets	55283	

Terms and Conditions

Order

Minimum order is £35.00.

Delivery Charge

Any larger items with a special delivery charge are indicated within the catalogue. Please call the sales desk for a delivery quotation on these items.

Credit

All orders accepted are subject to the approval of our credit department. If you are a new account, please furnish us with a bank reference and three supplier references. A credit limit will be imposed on new accounts until credit has been established.

Payment

Terms are net 30 days.

Cancellation

In the event an order is cancelled, charge will be made to cover labour, materials and overheads.

Returned Material

A handling charge of 25% is made on all standard parts returned for credit. Written permission and shipping instructions must be obtained before the return of any material. Special tooling cannot be returned.

Claims

All claims for shortages must be made within 3 days of the invoice date.

Prices

Prices and specifications subject to change without prior notice. E and OE. All prices are exclusive of VAT.

PRECISION TOOLING. UNBEATABLE PERFORMANCE.

For more than 40 years, Wilson Tool International® has provided industry-leading tooling solutions that enhance the performance of sheet metal fabricators.

The three divisions of Wilson Tool – Punch Press, Press Brake and Xtra – represent the most comprehensive line of tooling systems and accessories available. Our ability to consistently provide innovative, high quality products that outlast and outperform the competition is why the world's most successful fabricators rely upon Wilson Tool tooling systems.

A knowledgeable global sales force, multilingual customer support staff, same-day shipping and extensive distribution network are just a few of the benefits that keep our customers coming back time and again.



WILSON TOOL INTERNATIONAL (EUROPE) LTD OCTOBER 2009

Wilson Tool International

United States Worldwide Headquarters

12912 Farnham Avenue
White Bear Lake, MN 55110 USA
Tel: (651) 286 6001
Fax: (651) 286 5959
email: marketing@wilsonstool.com

United Kingdom European Headquarters

Stirling Road, South Marston Industrial Estate,
Swindon, Wiltshire, SN3 4TQ,
United Kingdom
Tel: +44 (0) 1793 831818
Fax: +44 (0) 1793 831945
email: sales@wilsonstool.eu.com

France

Bat B
51 Rue D'Ourdy
77550 Réau, France
Tel: +33 (0)164 13 47 80
Fax: +33 (0)164 13 47 81
email: ventes@wilsonstool.eu.com

Germany

Gottlieb Daimler Str 2
31552 Rodenberg, Germany
Tel: +49 5723-7470
Fax: +49 5723-74710
email: verkauf@wilsonstool.eu.com

Scandinavia

Islevdalvej 100
DK-2610, Rødovre, Denmark
Tel: +45 44 53 16 99
Fax: +45 44 53 06 07
email: salesdk@wilsonstool.eu.com

China

No. 6 Building of 58,
4018 Lane Huaning Road
Xinzhuang Industry Park,
201108 Shanghai, China
Tel: +86 21 51089638
Fax: +86 21 64422195
email: sales@wilsonstool.cn

Argentina

Von Wernicke 3041 PB
San Isidro, 1642 Buenos Aires
Argentina
Tel: +54 114 7634004
Fax: +54 114 5084190
email: ventasargentina@wilsonstool.com

email: sales@wilsonstool.eu.com
Visit us online at: www.wilsonstool.com