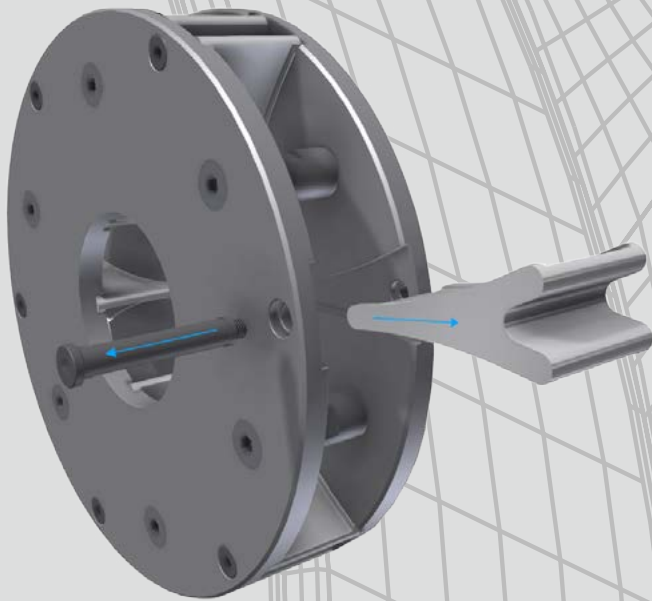


**REVOLUTIONARY  
INNOVATION**

# **Gamma<sup>®</sup> G** **300, 400, 500**



Doubles Life Expectancy, and designed to provide the easiest of maintenance – worldwide!

### ***The customer benefits:***

***Very quick and easy exchange of the throwing blades***

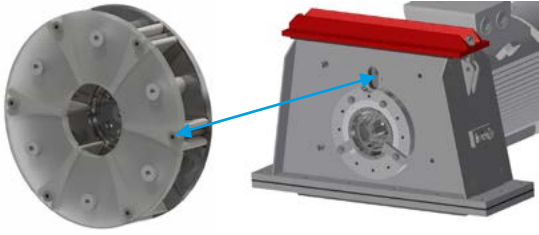
***Throwing blades can be utilised twice***

***Excellent energy efficiency***

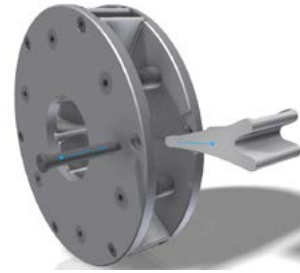
***Protected design of the throwing blades***

***Patent pending for the innovative blade mount***

## Technical highlights of the Gamma® blast turbines



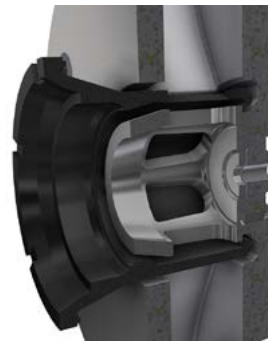
Retaining bolts can be easily loosened through an opening in the turbine housing.



After removal of the retaining bolt the throwing blade can be quickly exchanged or turned around.



Protected design of the throwing blades; these can be utilised twice.



Excellent energy efficiency.

## Other customer benefits

- High blast media throughput
- Easy and quick removal of the twin disk turbine
- Cast turbine wear liners
- Throwing blades made from forged tool steel

## Technical data

### **Performance characteristics of the Gamma® 300 G**

With an installed drive power from 5.5 to 15 kW the throwing speed varies between 40 – 80 m/s and with a media throughput of up to 350 kg/min.

### **Performance characteristics of the Gamma® 400 G**

With an installed drive power from 11 to 30 kW the throwing speed varies between 60 – 100 m/s and with a media throughput of up to 450 kg/min.

### **Performance characteristics of the Gamma® 500 G**

With an installed drive power from 22 to 55 kW the throwing speed varies between 70 – 130 m/s and with a media throughput of up to 700 kg/min.