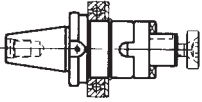
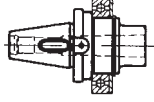
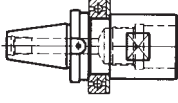
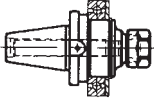
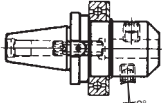
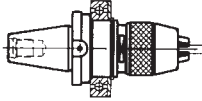
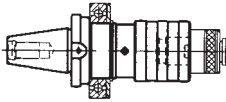


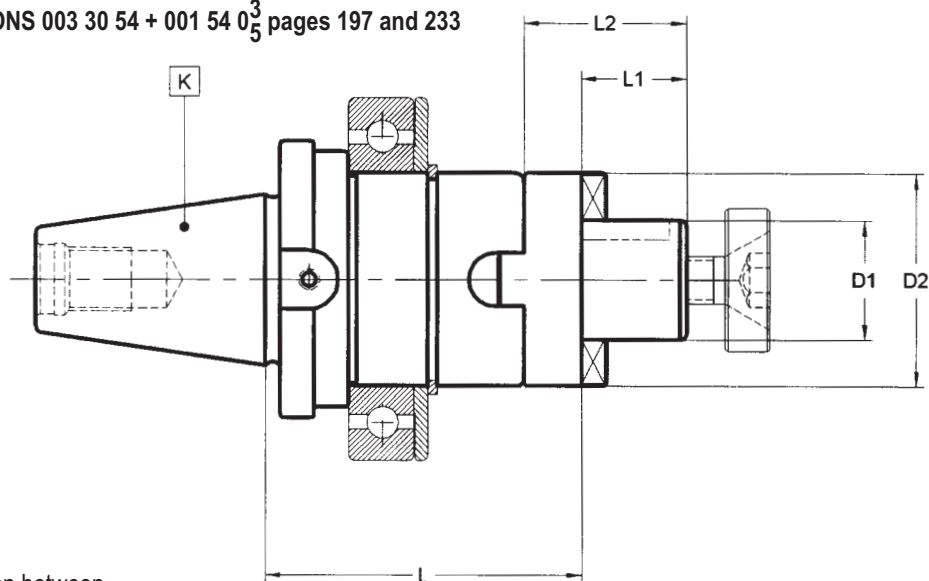


CHIRON

888 30 88 88 88

DESCRIPTION	Page
UNIVERSAL ARBORS	 <p>195</p>
REDUCING ADAPTERS For tapered Morse taper tools DIN 228-B or Morse taper tools with thread DIN 228-A	 <p>196</p>
BASIC ADAPTERS FOR MODULAR TOOLING	 <p>197</p>
COLLET CHUCKS ER TYPE (DIN 6499)	 <p>198</p>
WELDON AND WHISTLE-NOTCH HOLDERS	 <p>199</p>
SHORT DRILL CHUCKS	 <p>200</p>
QUICK-CHANGE TAPPING CHUCKS With self feed and compression system. For BILZ system tap adapter	 <p>201</p>

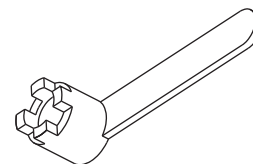
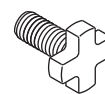
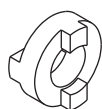
ALTERNATIVE SOLUTIONS 003 30 54 + 001 54 0³/₅ pages 197 and 233



Maximum circular deviation between K and D₁ ≤ 0,008

K	D ₁ h6	L	L ₁	L ₂	D ₂	COD. Form A
30	16	60	17	27	32	001 30 02 01 30
30	22	60	19	31	40	001 30 02 01 40
30	27	60	21	33	48	001 30 02 01 50

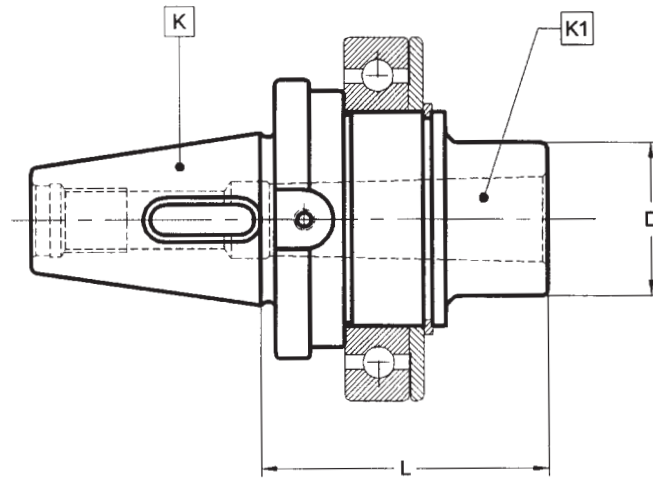
Accessories, see pages 267-293



D₁

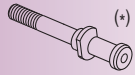
D ₁				OPTIONALS		
16	001 99 02 01 30	001 99 01 22 30	001 99 01 12 30	001 99 03 02 30	001 99 01 01 30	001 99 04 01 30
22	001 99 02 01 40	001 99 01 22 40	001 99 01 12 40	001 99 03 02 40	001 99 01 01 40	001 99 04 01 40
27	001 99 02 01 50	001 99 01 22 50	001 99 01 12 50	001 99 03 02 50	001 99 01 01 50	001 99 04 01 50
32	001 99 02 01 60	001 99 01 22 60	001 99 01 12 60	001 99 03 02 60	001 99 01 01 60	001 99 04 01 60

ALTERNATIVE SOLUTIONS 003 30 54 + 003 54 12 pages 197 and 236



Maximum circular deviation between K and K₁ ≤ 0,008

See page 276

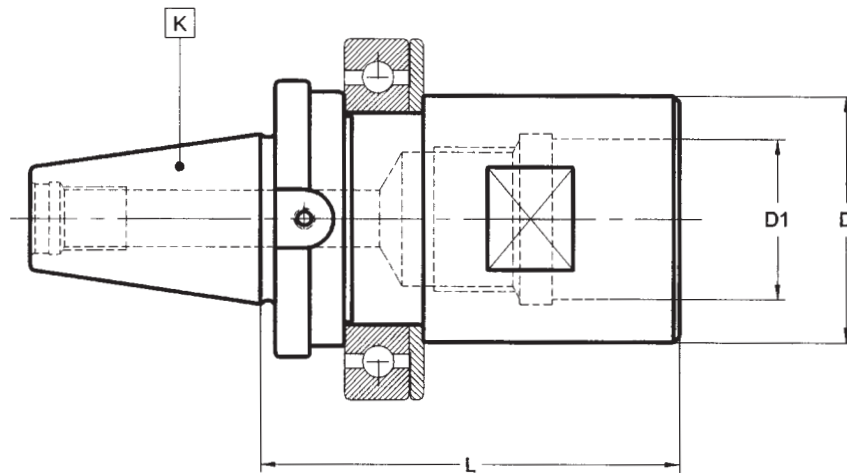
K	K ₁	L	D	COD. Form AD	 (*)
30	1	50	25	003 30 12 01 20	003 99 30 01 20
30	2	62	32	003 30 12 01 30	003 99 30 01 30
30	3	80	40	003 30 12 01 40	003 99 30 01 40

(*) Pull stud for tools with tightening thread

003 30 54 ...

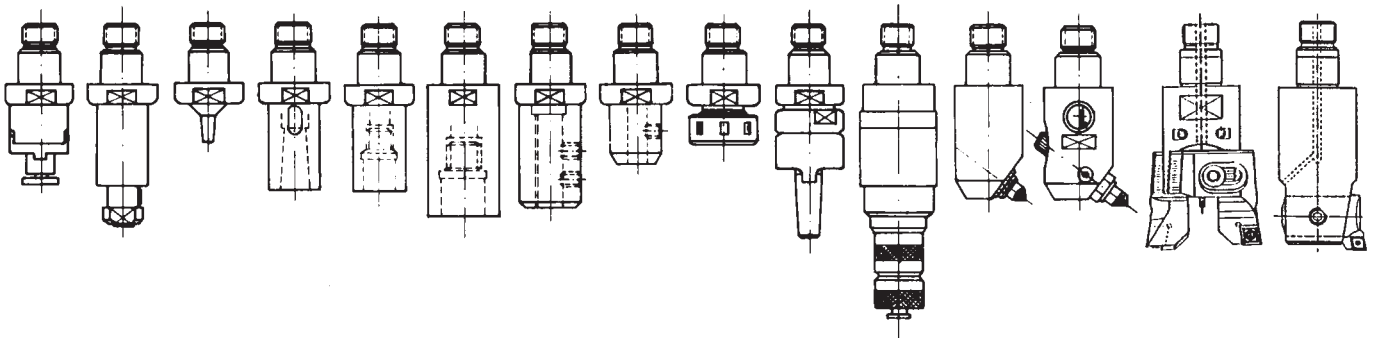
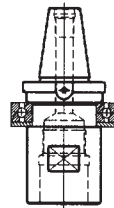
BASIC ADAPTERS FOR MODULAR TOOLING

Interchangeable with C.O. system



Maximum circular deviation between K and D₁ ≤ 0,005

K	D ₁ H5	D	L	L ₁	COD. Form AD			
30	30	46	80	48	003 30 54 01 06	351 30 00 01 01	001 99 03 01 55	305 02 01 03 20



See pages 231 - 251

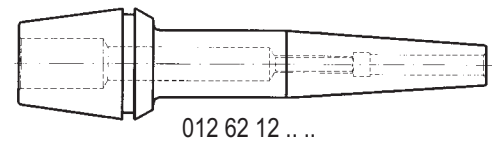
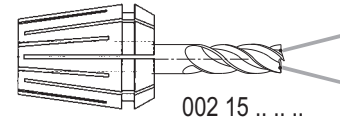
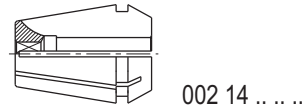
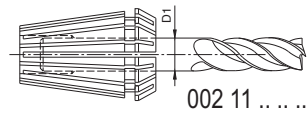
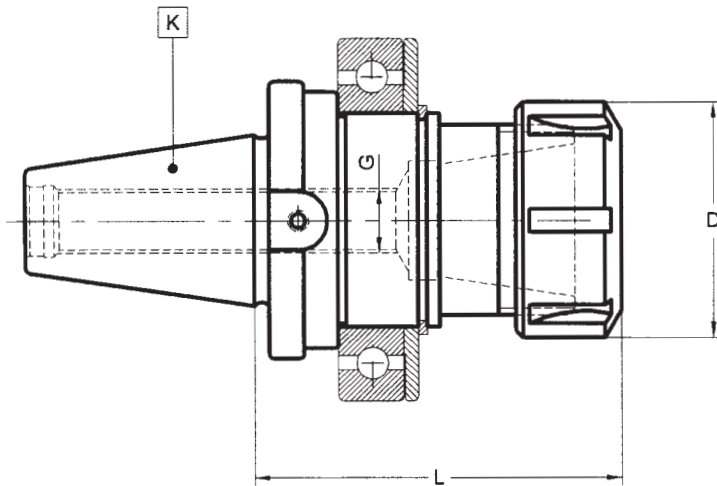
004 30 06

COLLET CHUCKS ER TYPE (DIN 6499)

For tools with cylindrical straight shank DIN 1835-A



ALTERNATIVE SOLUTIONS 003 30 54 + 004 54 06 pages 197 and 240



Maximum circular deviation between K and $D_1 \leq 0,003$

COLLETS see pages 257-259

K	SIZE	D ₁ máx.	L	D	G	COD. Form AD
30	(ER-25)	16	75	42	M-12	004 30 06 01 05
30	(ER-32)	20	80	50	M-12	004 30 06 01 06

For collets sets see page 266.

Accessories, see pages 267-293

OPTIONAL

- 1 - LENGTH ADJUSTMENT SCREW
- 2 - LENGTH ADJUSTMENT SCREW WITH THROUGH HOLE

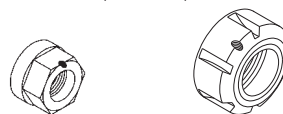


301 99 02 12 01	301 99 02 12 02
301 99 02 12 01	301 99 02 12 02

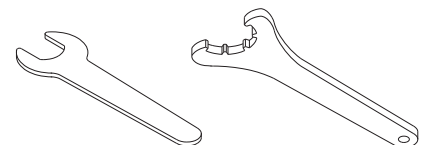
BALANCED NUT (STANDARD)



BEARING NUT (OPTIONAL)

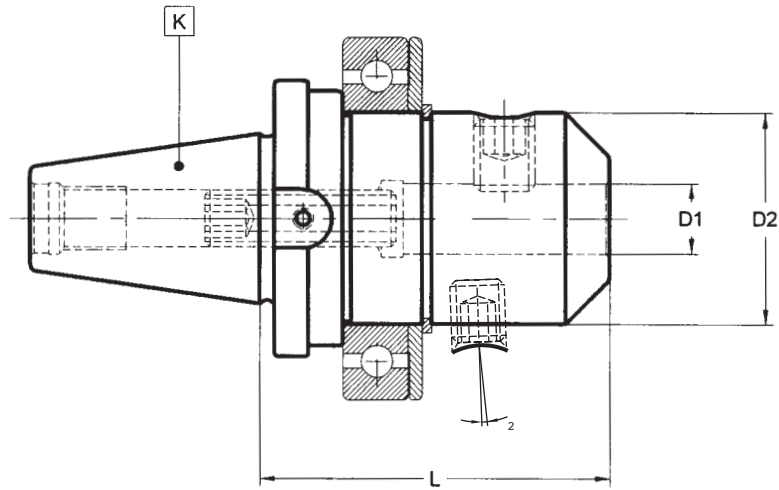


WRENCH (OPTIONAL)

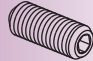



SIZE	BALANCED NUT (STANDARD)	BEARING NUT (OPTIONAL)	WRENCH (OPTIONAL)
ER 16	004 99 01 08 03	004 99 01 04 03	004 99 04 06 25
ER 25	004 99 01 03 05	004 99 01 04 05	004 99 04 03 05
ER 32	004 99 01 03 06	004 99 01 04 06	004 99 04 03 06

ALTERNATIVE SOLUTIONS 003 30 54 + 012 54 04 pages 197 and 248



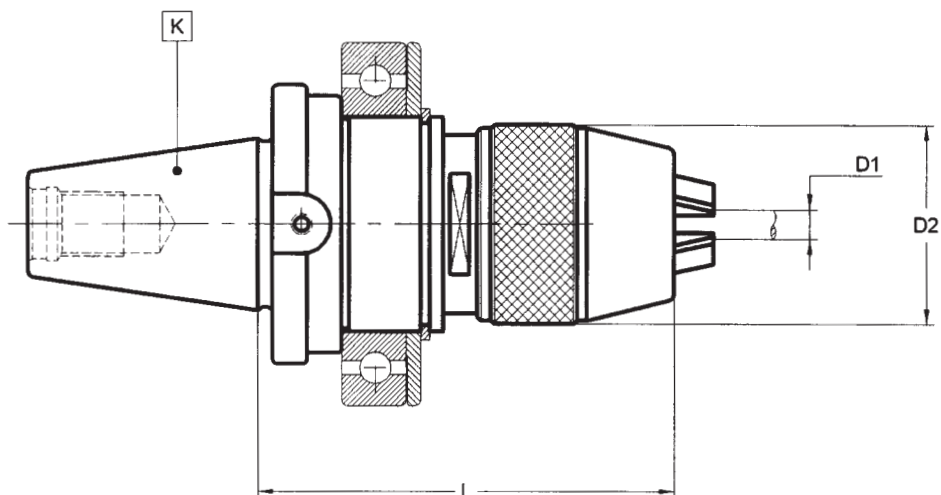
Maximum circular deviation between K and $D_1 \leq 0,003$

K	D ₁	* tol.	L	D ₂	COD. Form AD		
30	6		60	25	012 30 04 11 06	301 02 70 12 01	301 01 05 06 10
30	8		60	28	012 30 04 11 08	301 02 70 12 01	301 01 05 08 10
30	10		65	35	012 30 04 11 10	301 02 70 12 01	301 01 05 10 12
30	12	+0,005 0	65	40	012 30 04 11 12	301 02 70 12 01	301 01 05 12 16
30	14		65	40	012 30 04 11 14	301 02 70 12 01	301 01 05 12 16
30	16		70	40	012 30 04 11 16	301 02 70 12 01	301 01 05 14 16
30	18		70	40	012 30 04 11 18	301 02 70 12 01	301 01 05 14 16
30	20	+0,005 0	70	40	012 30 04 11 20	301 02 70 12 01	301 01 05 16 16

* The hole diameter and circular deviation tolerances have been significantly tightened up compared with DIN 1835 in order to achieve the highest levels of machining precision.

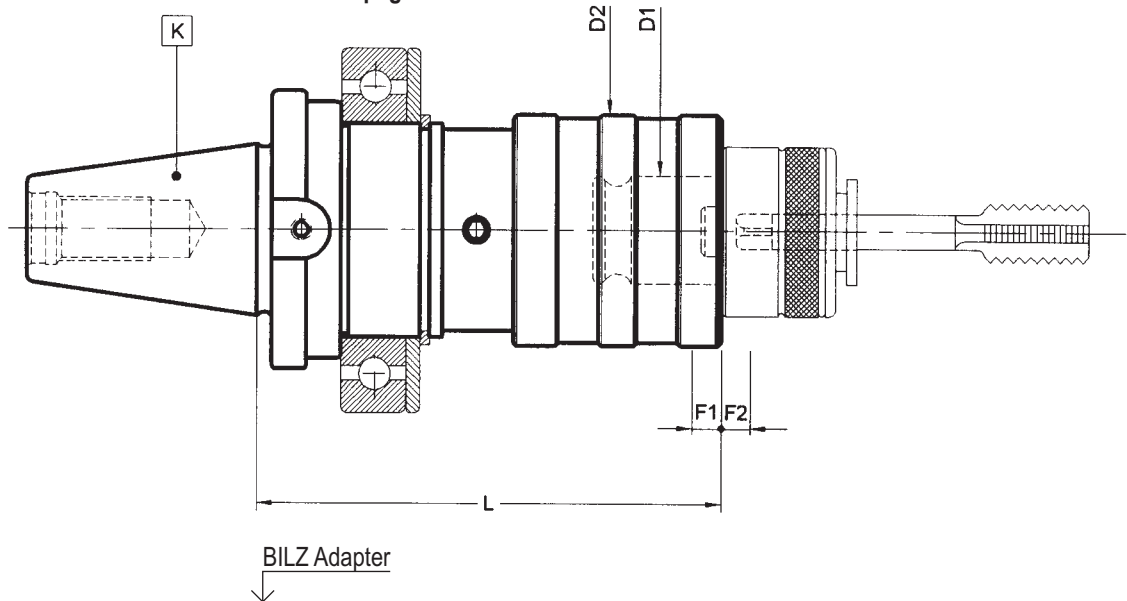
D₁ = > 25 mm: two clamping holes.


012 30 09 SHORT DRILL CHUCKS



K	D₁	L	D₂	COD. Form AD			
30	0-8	87	36	012 30 09 11 08	351 02 60 00 08	351 02 61 00 08	020 99 03 00 08

ALTERNATIVE SOLUTIONS 003 30 54 + 019 55 52 pages 197 and 229



K	CAP.	D ₁	L	D ₂	F ₁	F ₂	COD. Form A
30	M3-M12 (M-16)*	19	77	36	7,5	7,5	019 30 52 01 02
30	M8-M20 (M-30)*	31	87	53	12,5	12,5	019 30 52 01 03 

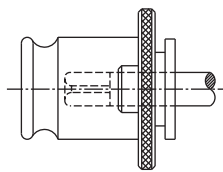
 Product outside of our present production program. Price subject to availability.

F₁ Compression run

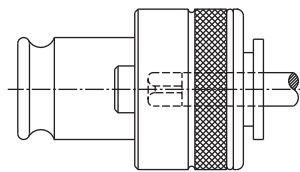
F₂ Extension run

* With 002 22 ... and 002 24 ... adapters

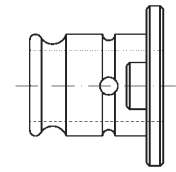
See page 263



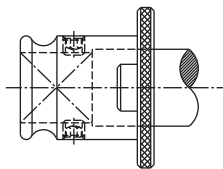
002 21 ..



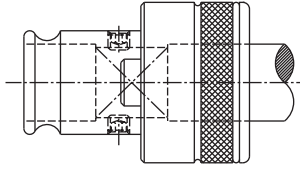
002 23 ..



002 20 ..



002 22 ..



002 24 ..

D₁

19 002 21 02 002 22 02 002 23 02 002 24 02

31 002 21 03 002 22 03 002 23 03 002 24 03