

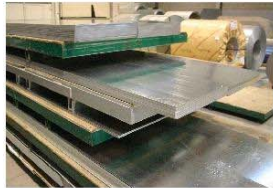


The OneCut series are complete groups of machines for cutting metal and deformation from coils.

Uncoil, straighten and cut the shape with absolute efficiency, avoiding manipulation, unnecessary costs and wastage of material.

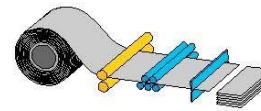
These are lines of work that do not require large areas and are highly productive.

Fully automated and programmable, with some adjustments necessarily manual have a total reliability.

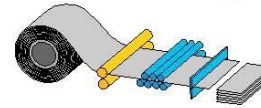


## SOMETHINGS APLICATIONS

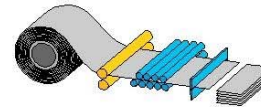
- Metal closings
- Metalic doors and blinds
- Metalic prefabricators
- Tows, caravans
- Ducs, air channel
- Industrial refrigerators
- Cutting centers
- Lifts
- General sheets procesings



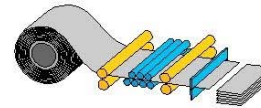
ONECUT15



ONECUT20



ONECUT20  
MAX



ONECUT30  
ONECUT40

## INSTALACION COMPOSITION

### · Coil Car

For various tonnages  
Machine built in high-strength steel soldier on design, with elevation by hydraulic cylinders and displacement motorized.

### · Uncoiler

Built with welded steel frame on dimensioning of high strength, spindle cantilever, hydraulic expansion of the 4 tiles autocentrantes motorized rotation and controlled by variable speed, working loop.

### · Controls

Controls all the elements that make up the line. At the top are all buttons, selectors, the digital display and keyboard embedded electronic program

### · Strip-end Input Unit

Table threading pneumatic or hydraulic.

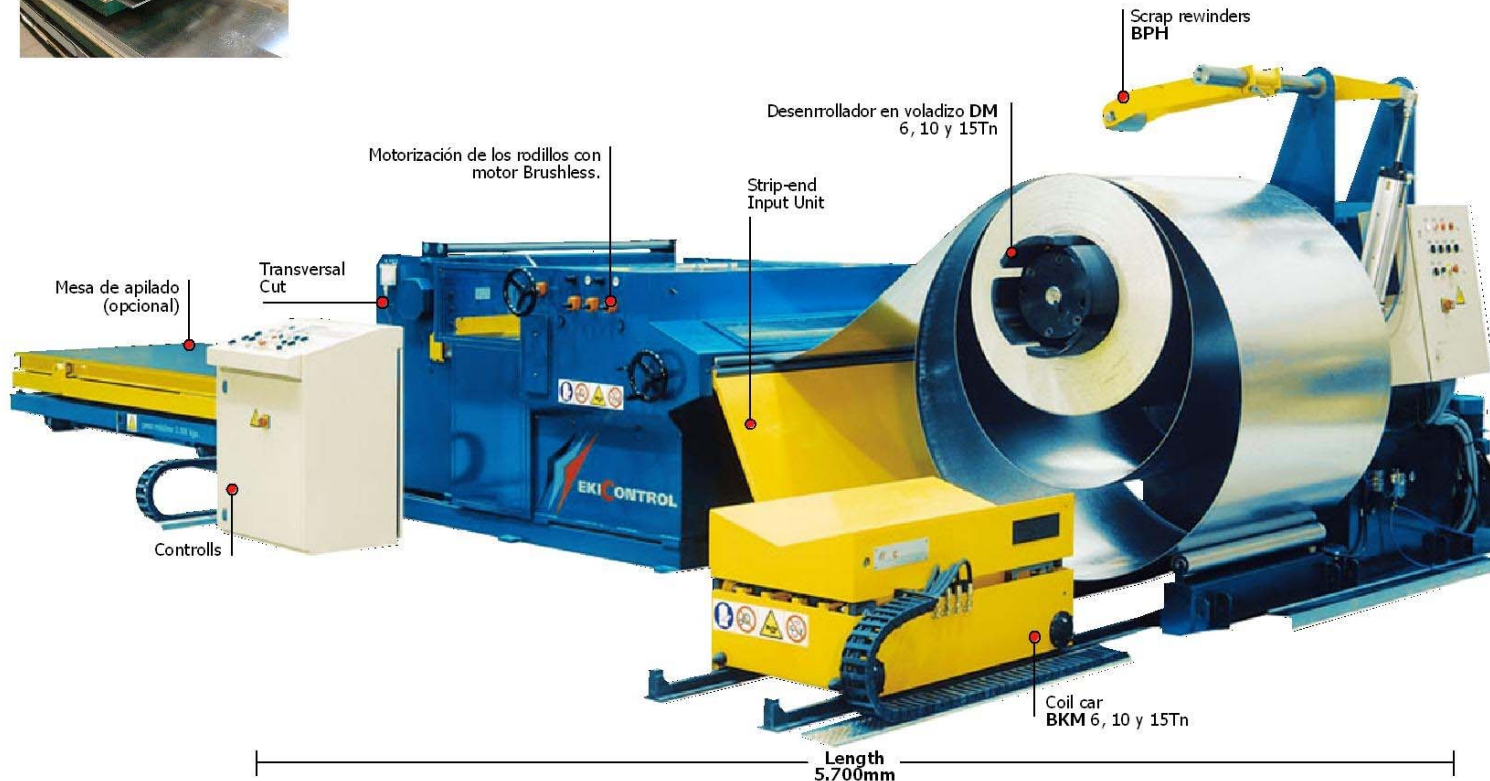
### · Straight and Cutting Unit

Straightened

Steel frame with 2 rollers soldier shot and 5,7 or 9 (depending on model) straightening rolls, with height adjustment and manual steering wheel through digital visualization of the elevation. Straighten engine BRUSHLESS

Shearing unit

Guillotine shear mechanical clutch brake TYRE of direct attack. Suitable for cutting stainless steel with double gift cutting edge. Frame smooth, without gooseneck, comprehensive regulation of space between blades.  
Pisador covered with PVC to protect the plate at the time of the court. centralised lubrication for guides and vital parts of the machine



### Different cutting possibilities

