



Solutions for Metalworking

www.tcpunzones.com



Trumpf® system

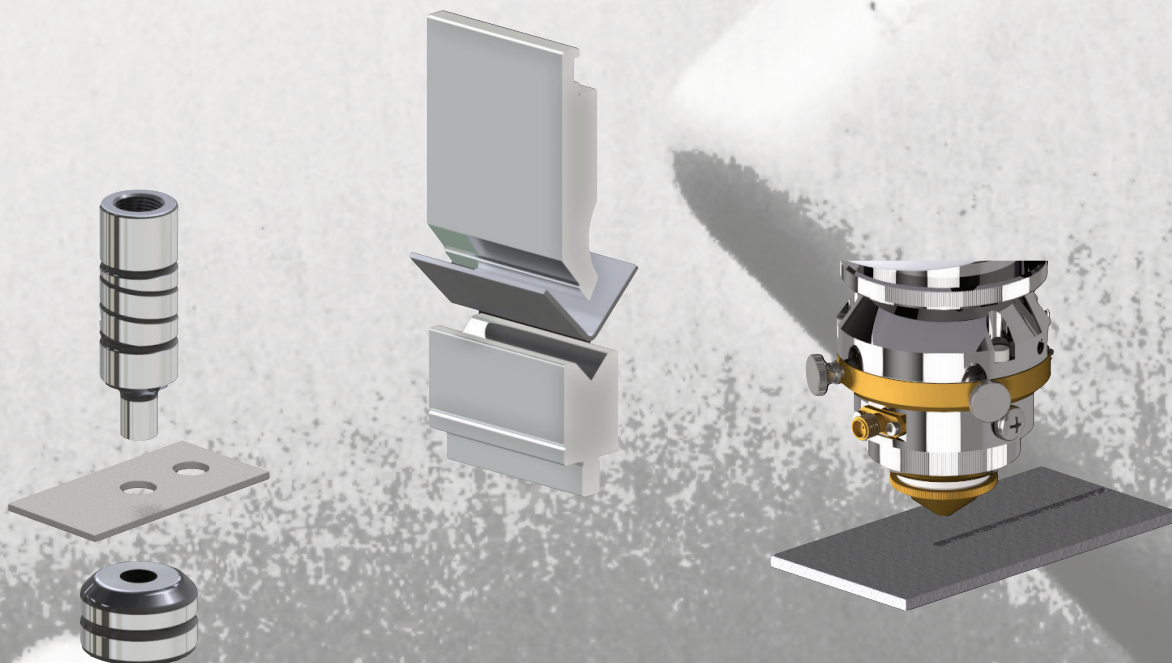
TC PUNZONES Y MATRICES
www.tcpunzones.com
Tlf. +34 934 228 023
info@tcpunzones.com

Trumpf® System

Tamaño 0 <i>Size 0</i>	pág. 3
Tamaño I <i>Size I</i>	pág. 4
Tamaño II <i>Size II</i>	pág. 5
Tamaño II Reforzado <i>Size II Heavy Duty</i>	pág. 6
Porta Cuchillas e Insertos <i>Blade Holder & Inserts</i>	pág. 7
Tamaño II Cortador con Expulsores <i>Size II Slitting with Self-Stripper</i>	pág. 8
Múltiples <i>Clusters</i>	pág. 9
Tamaño III <i>Size III</i>	pág. 10
Multi Tools <i>Multi Tools</i>	pág. 11
Tamaño I Logos <i>Size I Logos</i>	pág. 12
Tamaño I Avellanadores <i>Size I Countersink</i>	pág. 13
Tamaño I Ventilaciones <i>Size I Louvers</i>	pág. 14
Tamaño II Logos <i>Size II Logos</i>	pág. 15
Embutidores <i>Form Tools</i>	pág. 17
Chavetas, Anillos de Ajuste y Grupos de Máquinas <i>Keys, Alignment Ring & Machine Groups</i>	pág. 18
Cargadores y Reductora Matriz <i>Tool Cartidge & Die Adapter</i>	pág. 19

Información Técnica / Tecnic information

Figuras Especiales <i>Special Shapes</i>	pág. 20
Embuticiones <i>Forming Tools</i>	pág. 22
Múltiples <i>Clusters</i>	pág. 24
Tolerancia y Tonelaje <i>Clearance & Tonnage</i>	pág. 26
Tipo de Rectificado <i>Grinding type</i>	pág. 27
Tratamientos Superficiales <i>Coating Solutions</i>	pág. 28
Mantenimiento <i>Maintenance</i>	pág. 29
Servicio TC <i>TC Service</i>	pág. 30





Porta Punzón
Punch Holder

Ø6 mm
Ø10,5 mm



LARGO TOTAL

TOTAL LENGHT

L = 74,5mm

L = 77,5mm



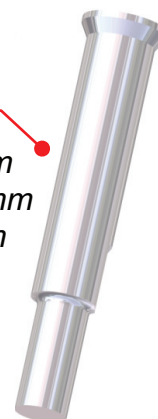
Punzón
Insertable
Insertable
Punch

Ø6 mm
L = 59,5 mm
L = 63 mm

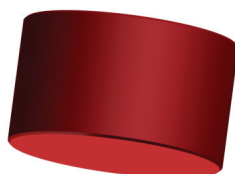


Punzón
Insertable
Formas y
Redondos
Insertable
Punch
Shapes &
Rounds

Ø10,5 mm
L = 59,5 mm
L = 63 mm



Pisador
de Uretano
Urethane
Stripper



Separador
Mini
Mini stripper

*GRUPO
GROUP
S



Separador
Tamaño II
Size II Stripper

*GRUPOS
GROUPS
A B C D E F G

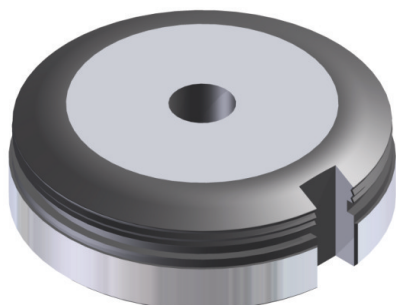


Separador
Tamaño II
Size II Stripper

*GRUPOS
GROUPS
H I



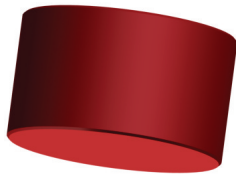
Matriz
Tamaño I
Size I die



Punzón
Punch



Pisador
de Uretano
Urethane
Stripper



Separador
Mini
Mini stripper

*GRUPO
GROUP
S



Separador
Tamaño II
Size II Stripper

*GRUPOS
GROUPS
A B C D E F G

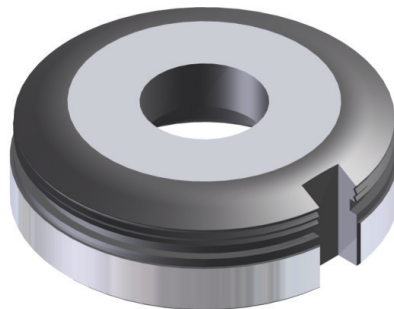


Separador
Tamaño II
Size II Stripper

*GRUPOS
GROUPS
H I



Matriz
Die



- Figura máxima inscrita en Ø31mm

- Maximum shape inscribed in Ø31mm

- Suplementos de matriz de espesor

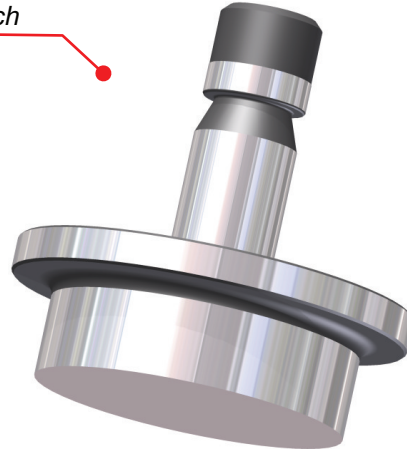
- Die supplement Ring

0,3 - 0,5 mm

Tamaño II / Size II



Punzón
Punch



Pisador
de Uretano
Urethane
Stripper



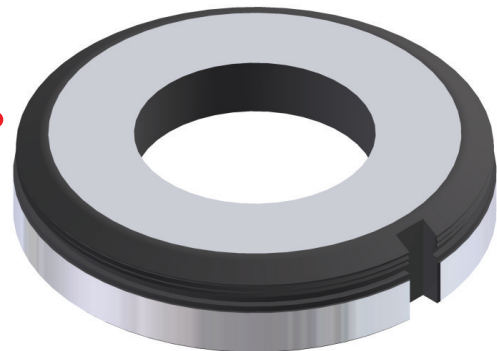
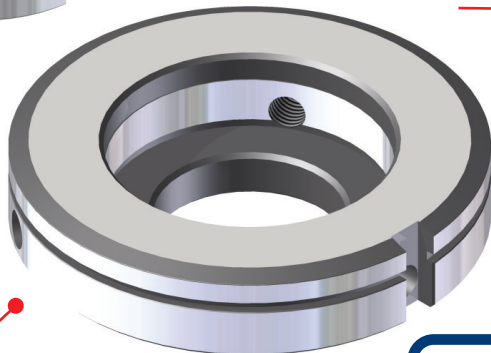
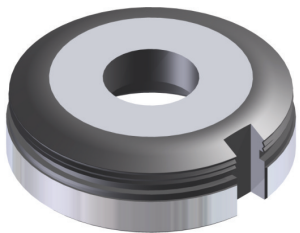
Separador
Tamaño II
Size II Stripper
*GRUPOS
GROUPS
A B C D E F G

Separador
Tamaño II
Size II Stripper
*GRUPOS
GROUPS
H I



Matriz
Tamaño I
Die size I

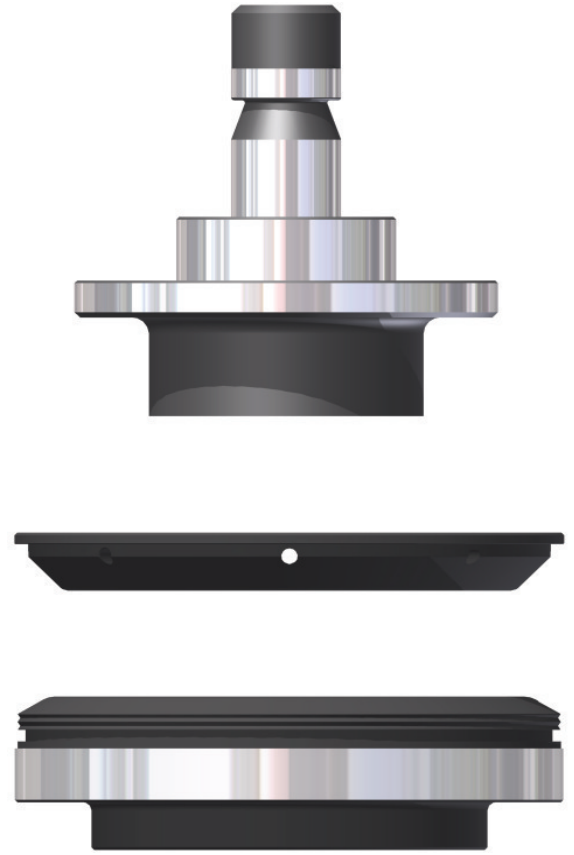
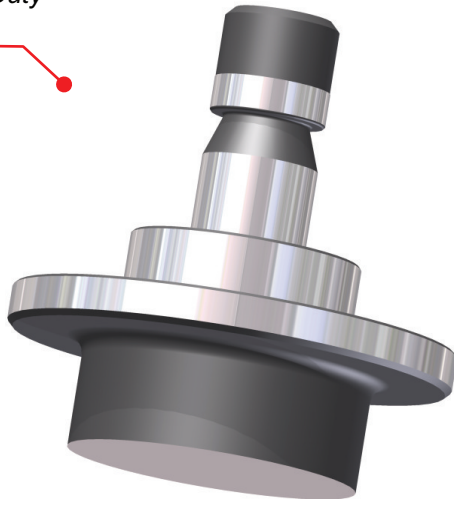
Matriz
Tamaño II
Die Size II



Reductora
Matriz 100/60
Die adapter 100/60

- Figura máxima inscrita en Ø77mm
- Maximum shape incised in Ø77mm
- Suplementos de matriz de espesor
- Die supplement Shims
- 0,3 - 0,5 mm

Punzón
Reforzado
Heavy Duty
Punch



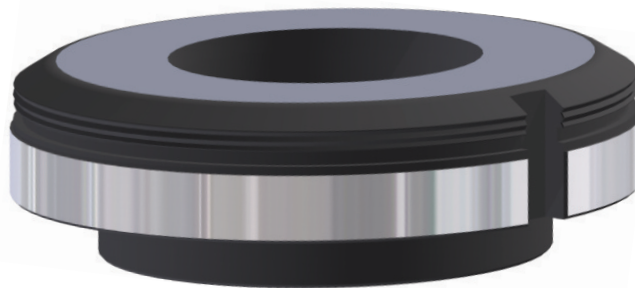
Separador
Tamaño II
Size II Stripper
*GRUPOS
GROUPS
A B C D E F G



Separador
Tamaño II
Size II Stripper
*GRUPOS
GROUPS
H I

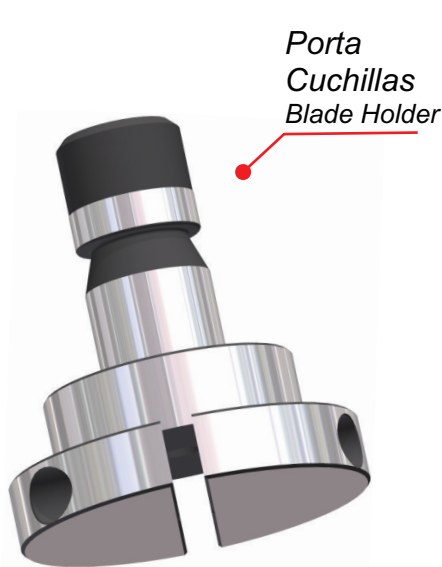


Matriz
Reforzada
Heavy Duty
Die

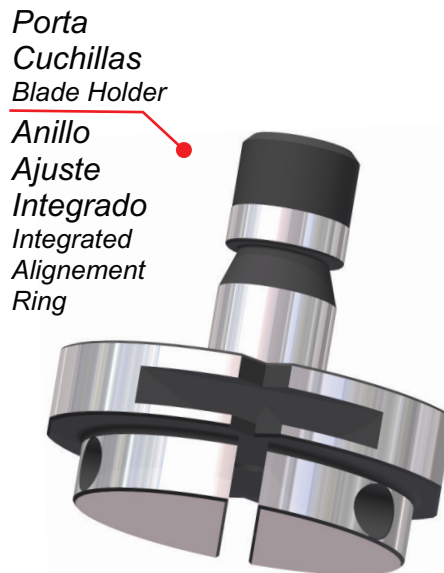


- **Figura máxima inscrita en Ø77mm**
- Maximum shape inscribed in Ø77mm
- **Suplementos de matriz de espesor**
- Die supplement Ring
0,3 - 0,5 mm

Porta Cuchillas e Insertos / Blade & Inserts Holder



Porta Cuchillas
Blade Holder



Porta Cuchillas
Blade Holder
Anillo Ajuste Integrado
Integrated Alignment Ring

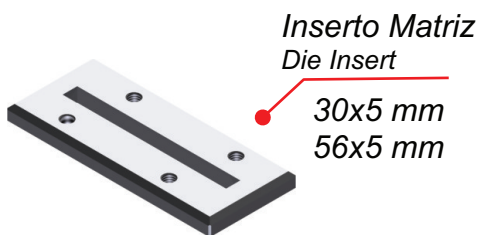


Cuchillas
Blades
30x5 mm
56x5 mm
76,2x5 mm

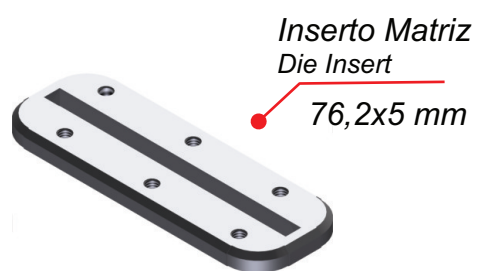
Separador
Tamaño II
Size II Stripper
*GRUPOS
GROUPS
A B C D E F G



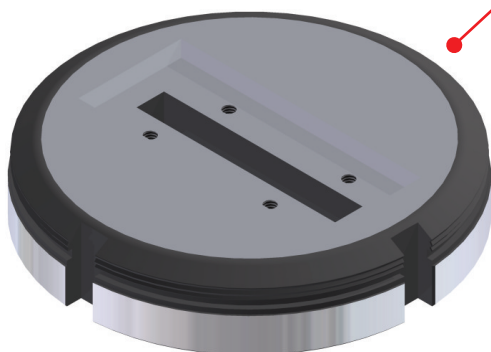
Separador
Tamaño II
Size II Stripper
*GRUPOS
GROUPS
H I



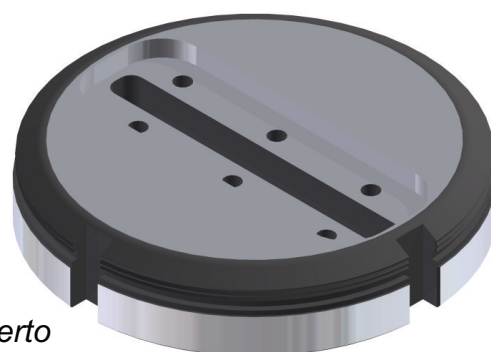
Inserto Matriz
Die Insert
30x5 mm
56x5 mm



Inserto Matriz
Die Insert
76,2x5 mm

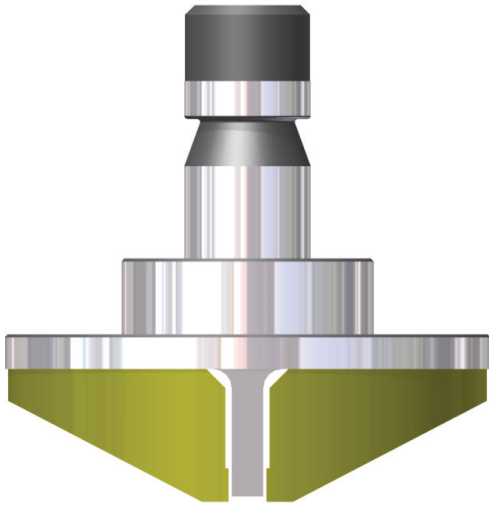


Porta Inserto
Insert Holder Die
30x5 mm
56x5 mm



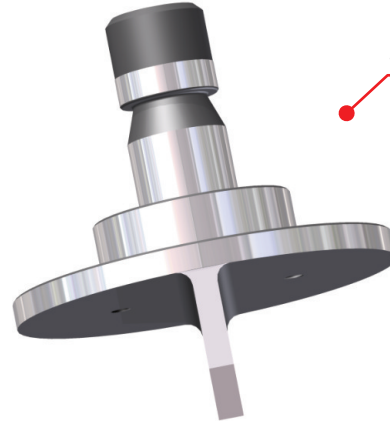
Porta Inserto
Insert Holder Die
76,2x5 mm

TRUMPF®



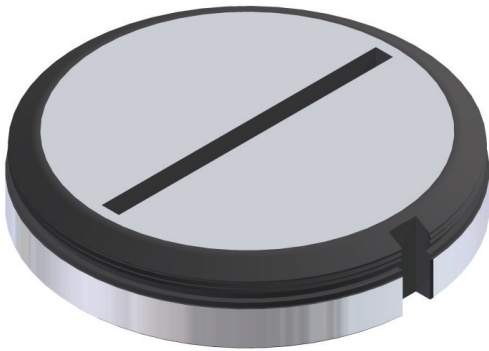
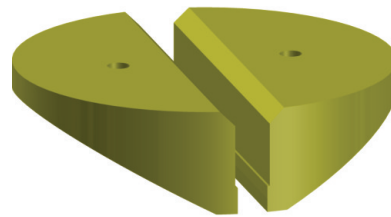
Punzón
Cortador
Slitting Punch

76,2x5 mm
56x5 mm



Pisadores
Poliuretano
Urethane Self
Stripper

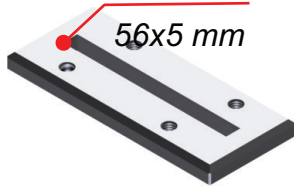
76,2x5 mm
56x5 mm



Matriz
Tamaño II
Size II Die
76,2x5 mm
56x5 mm

Inserto Matriz
Die Insert

56x5 mm



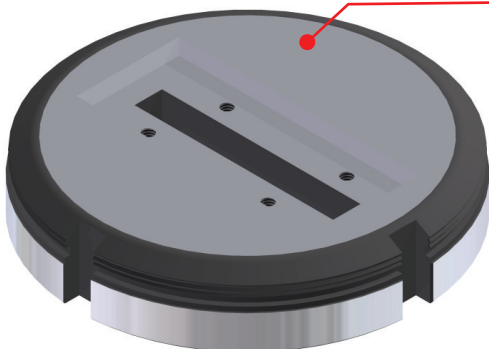
Inserto Matriz
Die Insert

76,2x5 mm



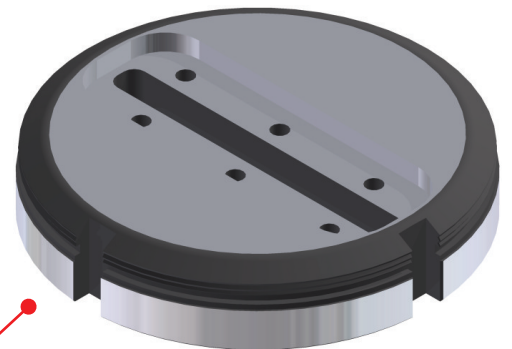
Porta Inserto
Insert Holder Die

56x5 mm



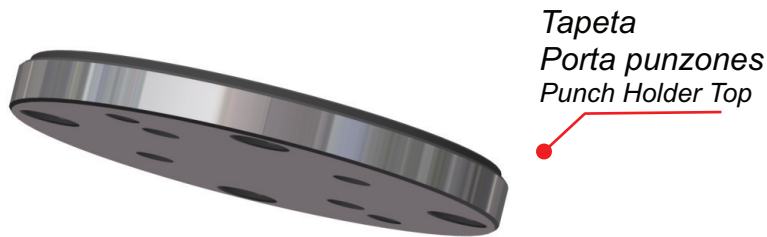
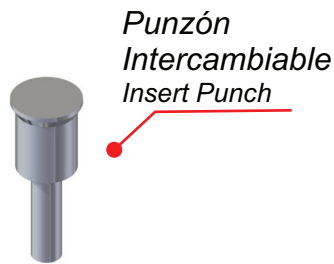
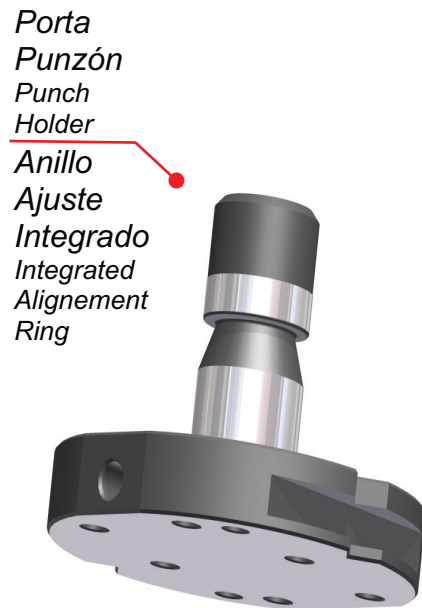
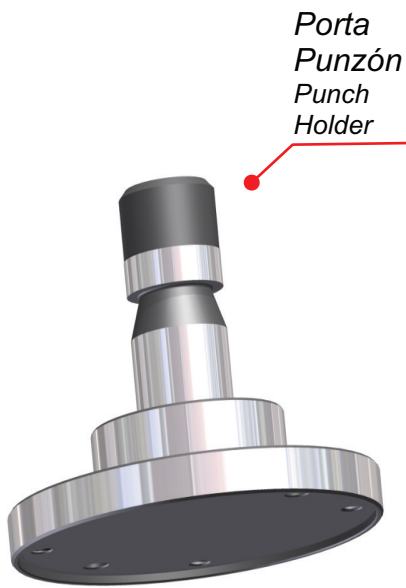
Porta Inserto
Insert Holder Die

76,2x5 mm



Tamaño II Múltiples / Size II Clusters

TRUMPF®



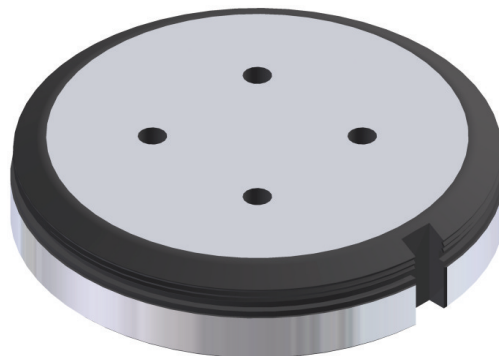
Separador
Tamaño II
Size II Stripper
*GRUPOS
GROUPS
A B C D E F G



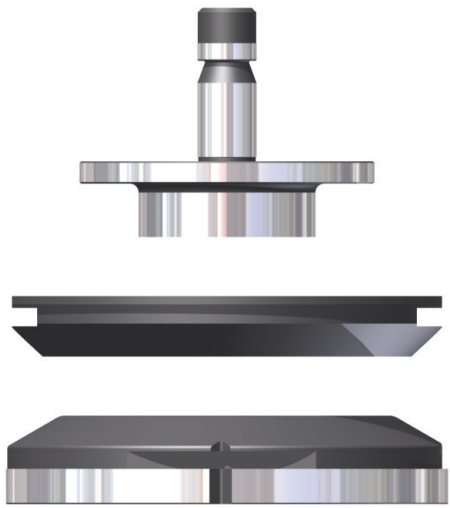
Separador
Tamaño II
Size II Stripper
*GRUPOS
GROUPS
H I



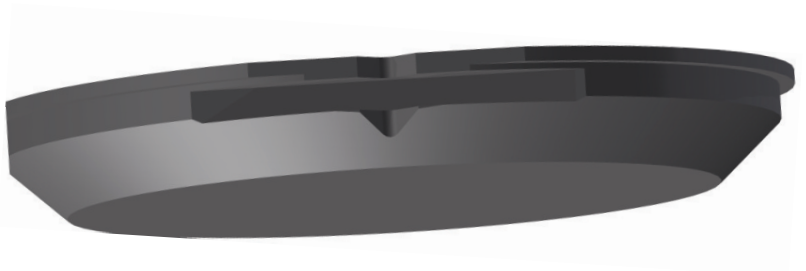
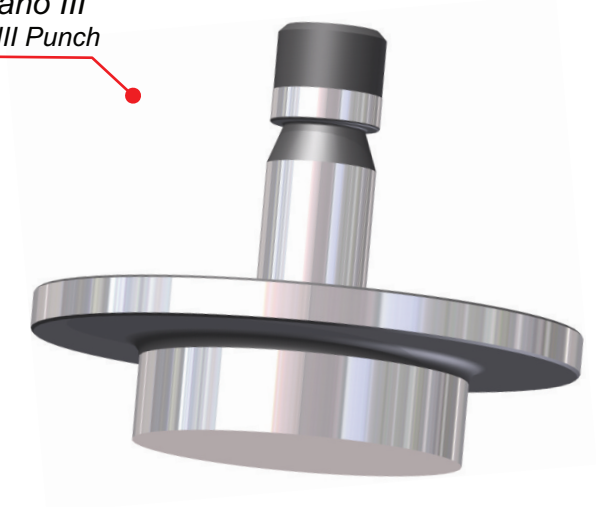
Matriz
Tamaño II
Size II Die



Todos los múltiples requieren un estudio previo.
All clusters needs previous study.

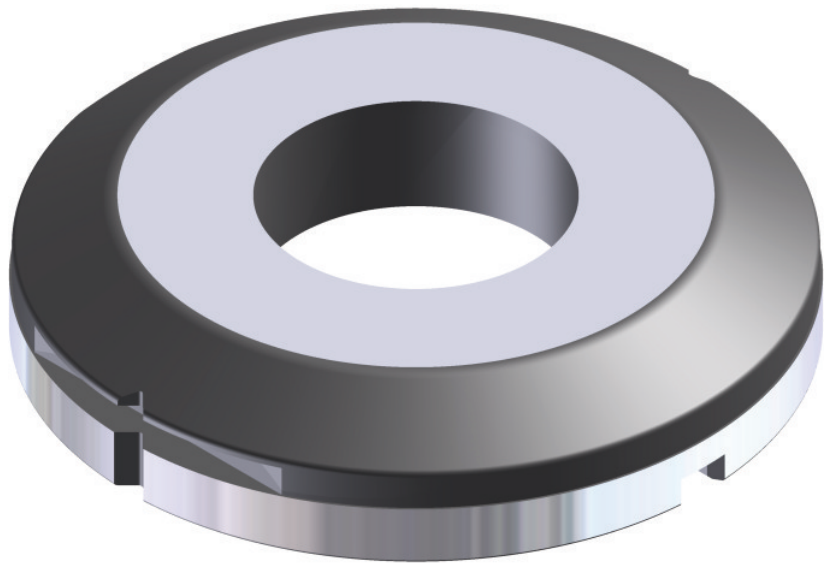


Punzón
Tamaño III
Size III Punch



Separador
Tamaño III
Size III Stripper

Matriz
Tamaño III
Size III Die

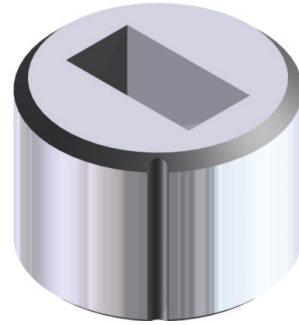


- Figura máxima inscrita en Ø100mm
- Maximum shape inscribed in Ø100mm



Punzón
Punch
MT-4

Max.
Ø16mm

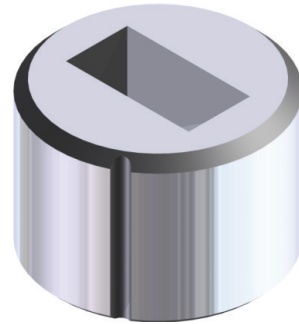


Matriz
Die
MT-4



Punzón
Punch
MT-3 & 6

Max.
Ø10,5mm

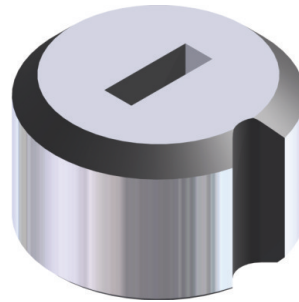


Matriz
Die
MT-3 & 6



Punzón
Punch
MT-5

Max.
Ø16mm



Matriz
Die
MT-5

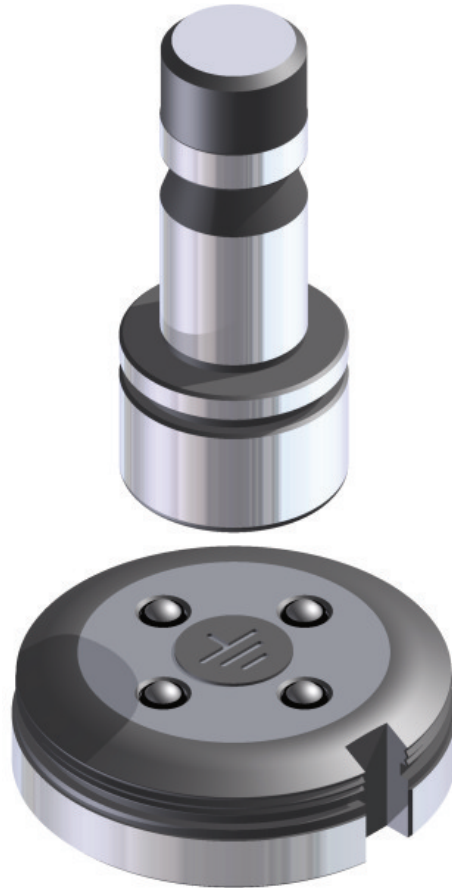


Punzón
Punch
MT-10

Max.
Ø10,5mm



Matriz
Die
MT-10



Bola
Expulsora
Ejector Ball

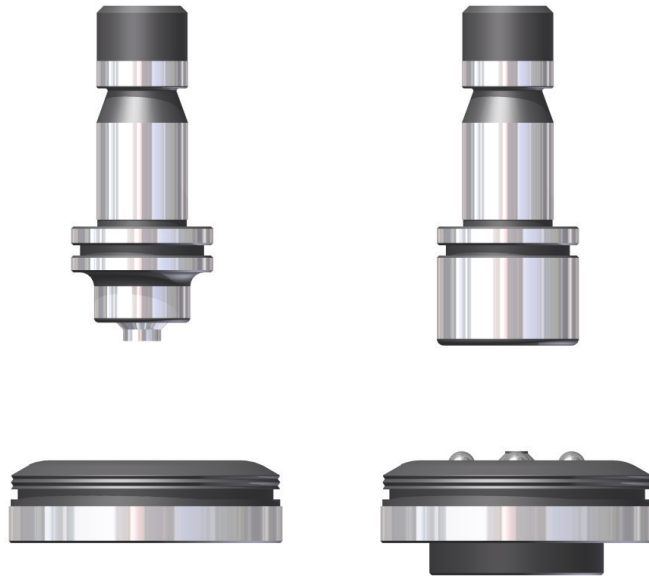


Punzón
Punch



Matriz
Die

Tamaño I Avellanadores / Size I Countersink Tools

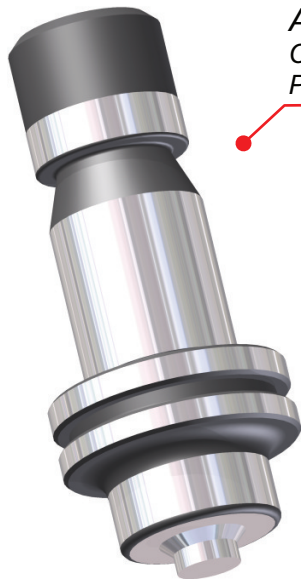


Punzón
Avellanador
Countersink
Punch

Hacia
Abajo
Down
Version

Punzón
Avellanador
Countersink
Punch

Hacia
Arriba
Up
Version

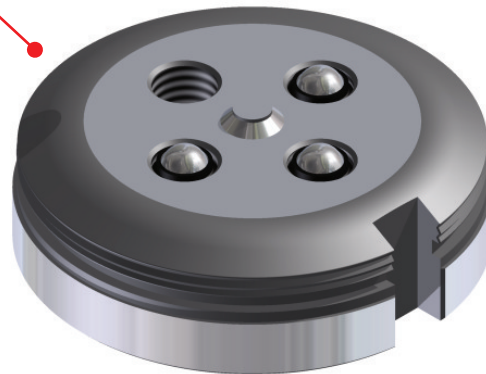
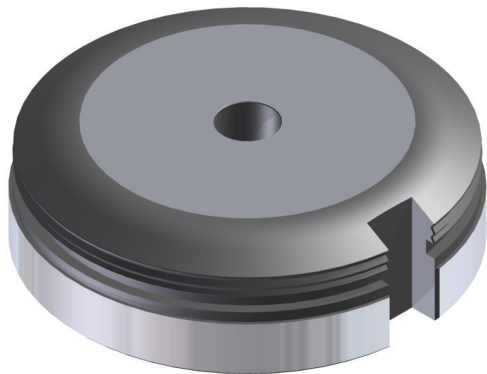


Bola
Expulsora
Ejector Ball



Hacia
Arriba
Up Version

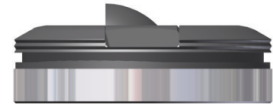
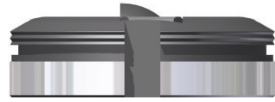
Matriz
Avellanador
Countersink
Die



Hacia
Abajo
Down Version

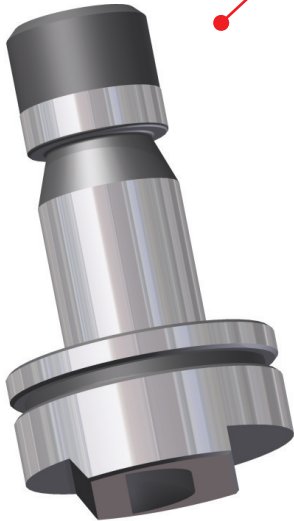
Matriz
Avellanador
Countersink
Die

Todos los avellanadores requieren un estudio previo.
All countersink tools needs previus study.



Punzón
Ventilación
Louver Punch
L=32

Punzón
Ventilación
Louver Punch
Sin Fin
Continuous



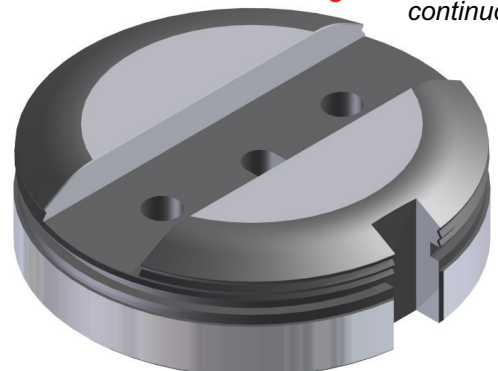
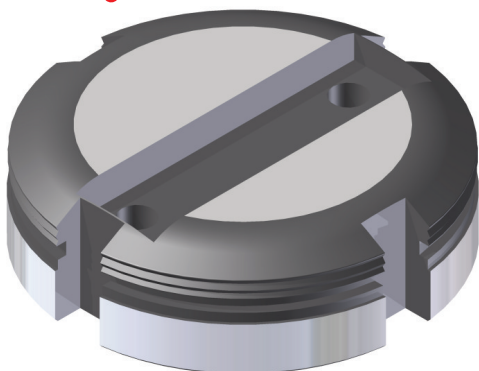
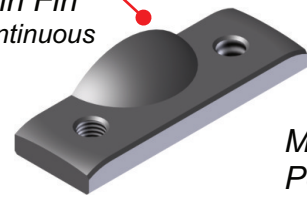
Inserto
Ventilación
Louver Insert
L=32

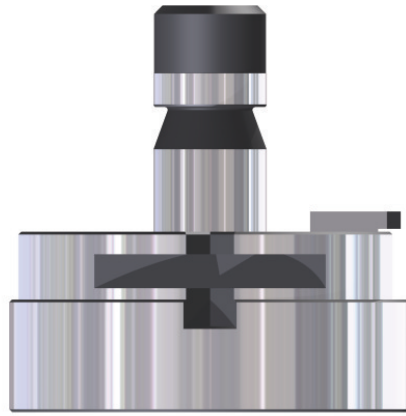
Inserto
Ventilación
Louver Insert
Sin Fin
Continuous

Matriz
Porta Insertos
Insert Holder Die
L=32



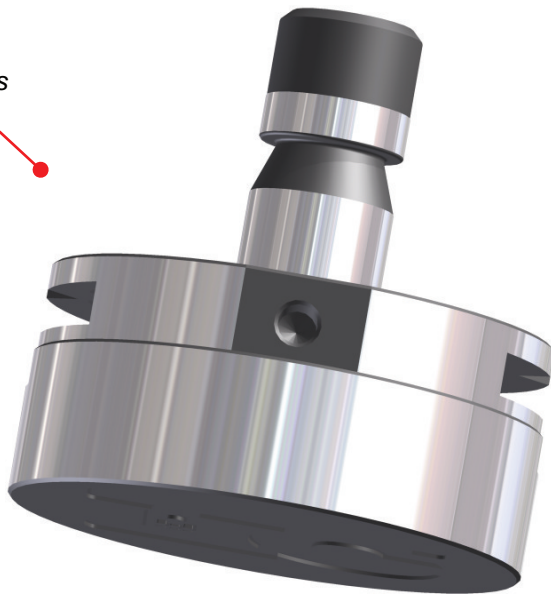
Matriz
Porta Insertos
Insert Holder Die
Sin Fin
continuous



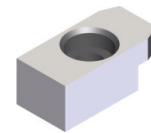


Punzón
Embutidor
Logos
Logo Emboss
Punch

Anillo de
Ajuste
Integrado
Integrated
Alignment
Ring



Chaveta
Anillo de
Ajuste
Key of
Alignemet
Ring



Matriz
Embutidor
Logos
Logo Emboss
Die

Reforzada
Reinforced



Bola
Expulsora
Ejector Ball





- Todos los embutidores requieren un estudio previo.
- All form tools needs previous study.
- Figuras embutidas estándar ver pág. 22-23.
- Standard forms look at page 22-23.
- La imagen mostrada es un ejemplo de embutidor.
- The image show is an example of form tool.

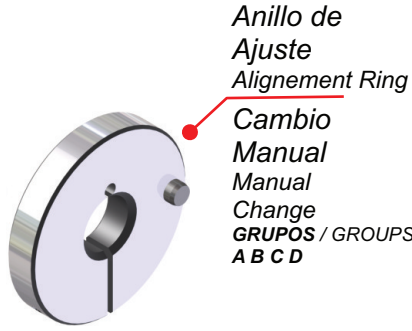
Roller Nervio
Rib Roller
Roller Incisor
Incisor Roller
Roller Reborde
Offset Roller
Roller Escritura
Marking Roller



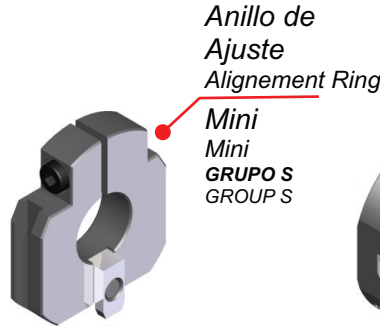
-Todos los embutidores requieren un estudio previo.
-All form tools needs previous study.
-La imagen mostrada es un ejemplo de embutidor.
-The image show is an example of form tool.

Chavetas y Anillos de Ajuste / Keys & Alignment Rings

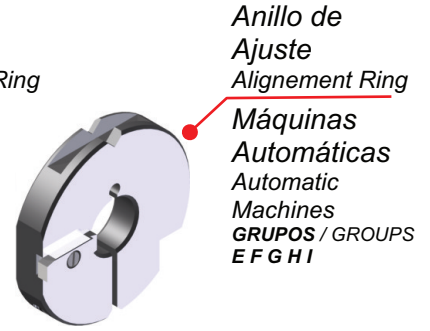
TRUMPF®



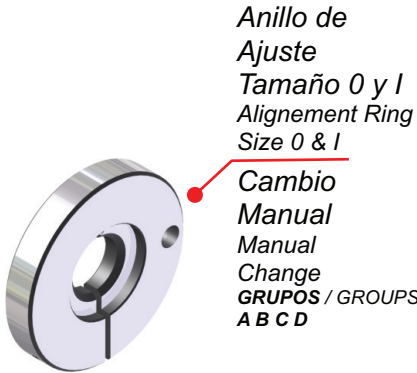
Anillo de Ajuste
Alignment Ring
Cambio Manual
Manual Change
GRUPOS / GROUPS
A B C D



Anillo de Ajuste
Alignment Ring
Mini
Mini
GRUPO S
GROUP S



Anillo de Ajuste
Alignment Ring
Máquinas Automáticas
Automatic Machines
GRUPOS / GROUPS
E F G H I



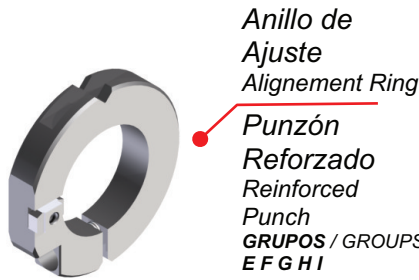
Anillo de Ajuste
Alignment Ring
Tamaño 0 y I
Size 0 & I
Cambio Manual
Manual Change
GRUPOS / GROUPS
A B C D



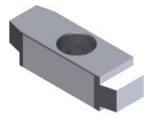
Anillo de Ajuste
Alignment Ring
Tamaño 0 y I
Size 0 & I
Mini
Mini
GRUPO S
GROUP S



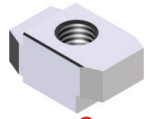
Anillo de Ajuste
Alignment Ring
Tamaño 0 y I
Size 0 & I
Máquinas Automáticas
Automatic Machines
GRUPOS / GROUPS
E F G H I



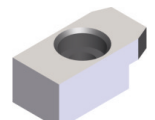
Anillo de Ajuste
Alignment Ring
Punzón Reforzado
Reinforced Punch
GRUPOS / GROUPS
E F G H I



Chaveta Anillo de Ajuste
Alignment Ring Key

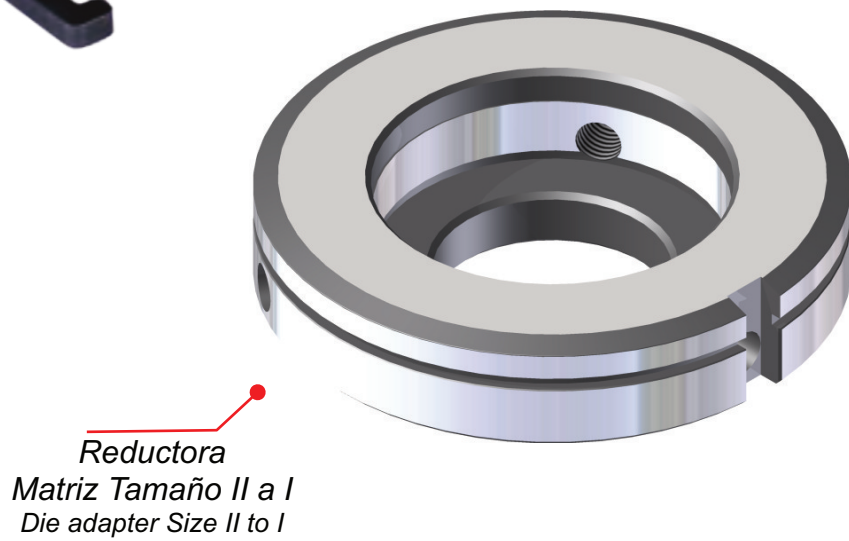


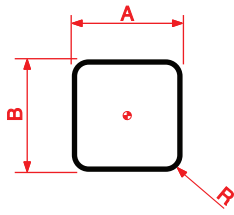
Chaveta Anillo de Ajuste Punzón Reforzado
Alignment Ring Key Reinforced Punch



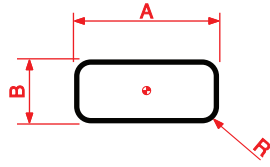
Chaveta Anillo de Ajuste Mini
Alignment Ring Key Mini

A	B	C	D	E	
CN 700	CN 901E	CN 1200S	TRUMATIC	SUMINAT 400	
CN 900	CN 902	CN 1200A	20	TRUMATIC	TRUMATIC
CN 701	CS 75	CS 15	20A	150K	202K
CN 901	CS 75.2	CS 20	202M	151K	225K
		CS 20A		152K	235K
		MP 25		180K	300K
		MP 25D		180.2K	300LK
				180KD	300PK
				180LK	400K
				180.2LK	
F	G	H	I	S	
TRUMATIC	TRUMATIC	TRUMATIC	TRUMATIC	MINIMATIC	
150W	20AW	190R	1000R	100	
152W	202W	200R	2000R	TRUMATIC	
180W	300W	500R	2010R	120R	
180.2W	300LW	600L	2020R	160R	
180R	300PW		3000-3000R		
180LW	300TOP		3000-6000R		
180.2LW	400W		5000R		
ELX/SWIF			6000R		
T 185					
240					
240R					
250					
260R					

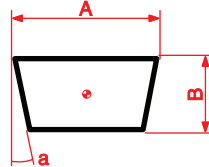




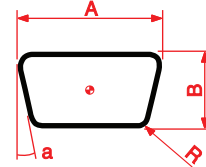
B1



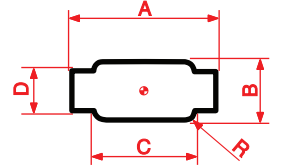
B2



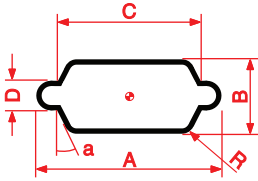
B3



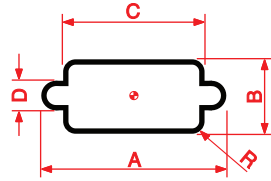
B4



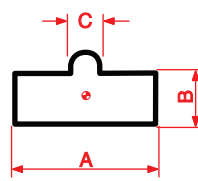
B5



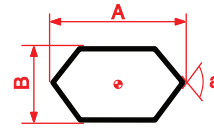
B6



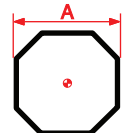
B7



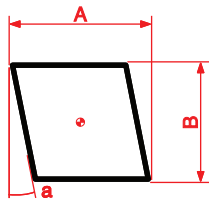
B8



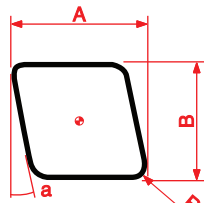
B9



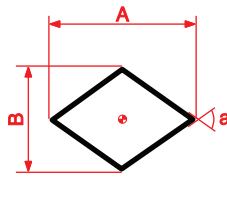
B10



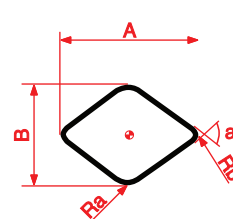
B11



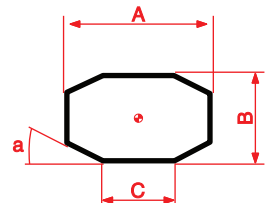
B12



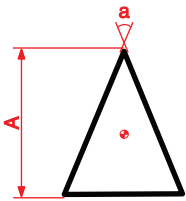
B13



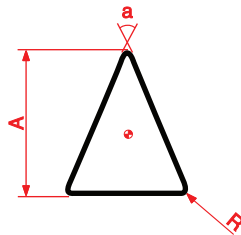
B14



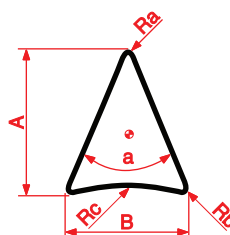
B15



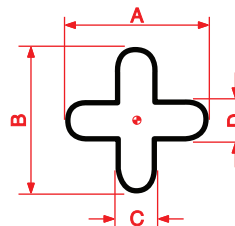
B16



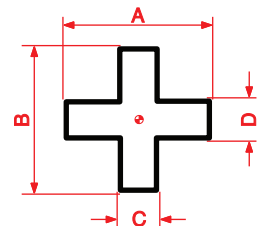
B17



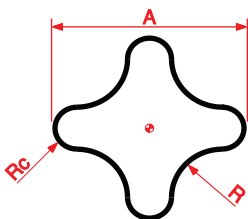
B18



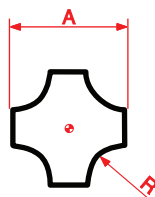
B19



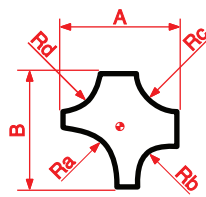
B20



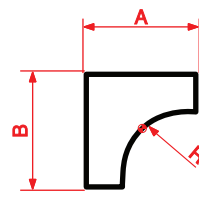
B21



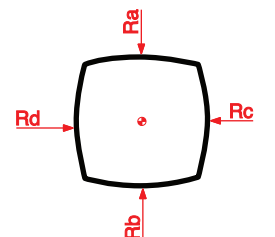
B22



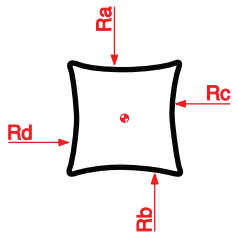
B23



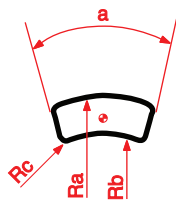
B24



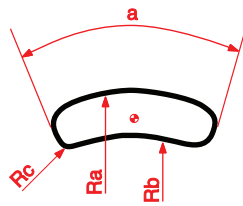
B25



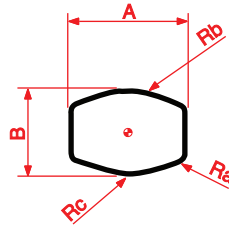
B26



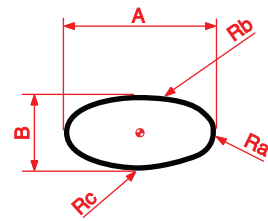
B27



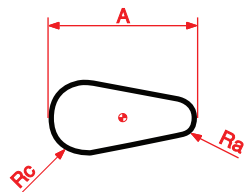
B28



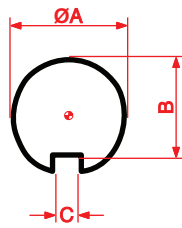
B29



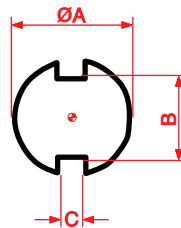
B30



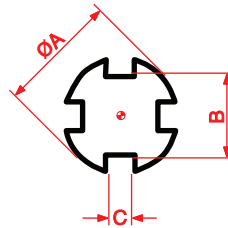
B31



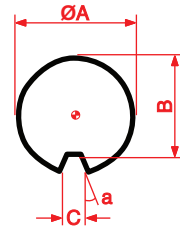
B32



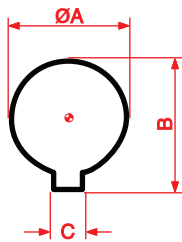
B33



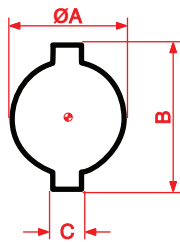
B34



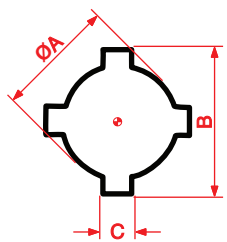
B35



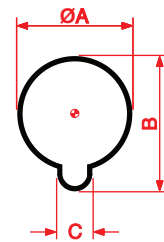
B36



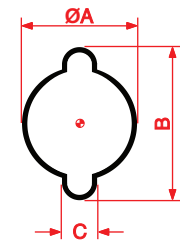
B37



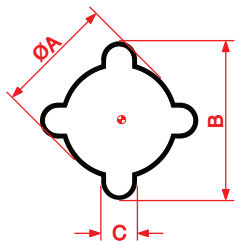
B38



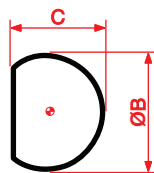
B39



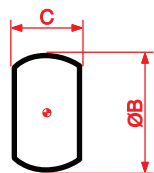
B40



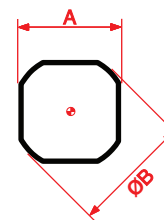
B41



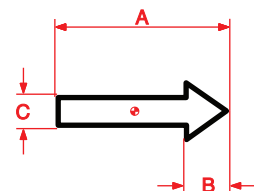
B42



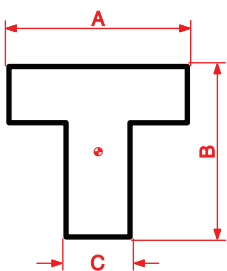
B43



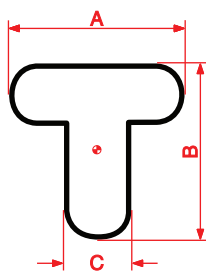
B44



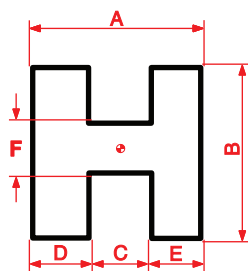
B45



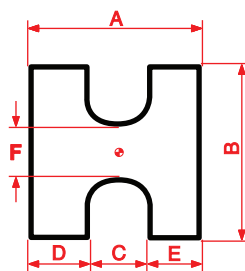
B46



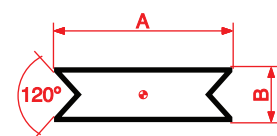
B47



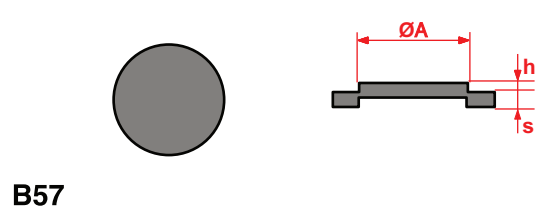
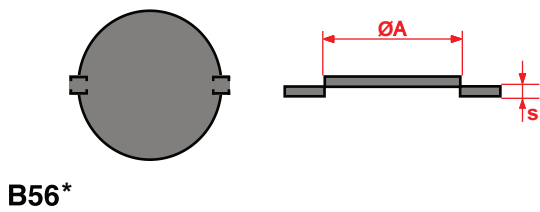
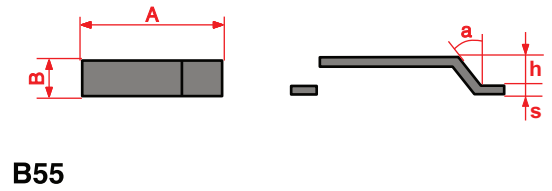
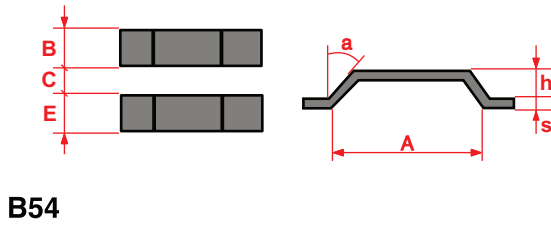
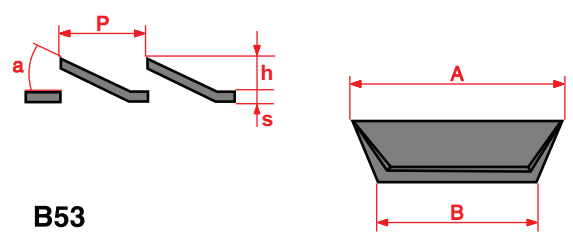
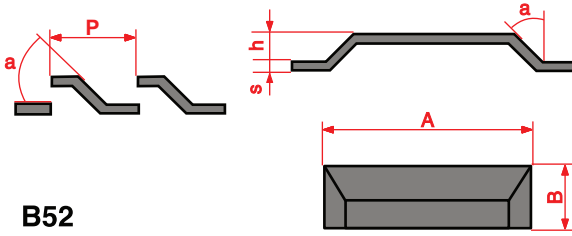
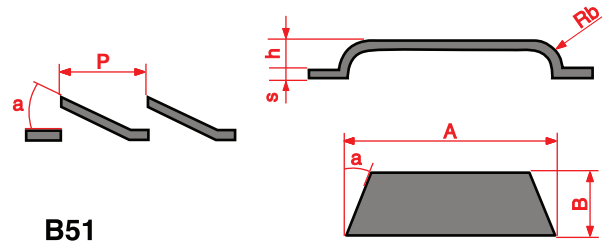
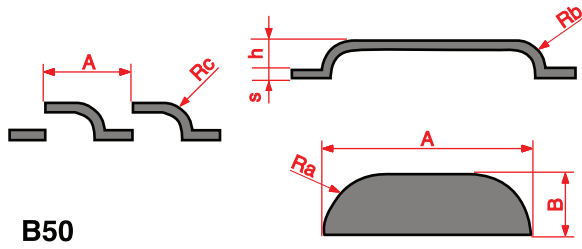
B48



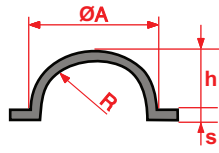
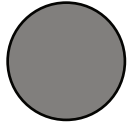
B49



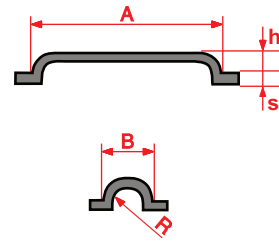
B49-A



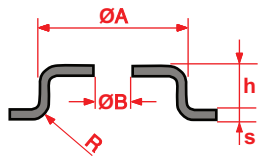
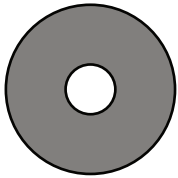
***Simple o Doble**
*Single or double



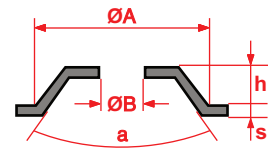
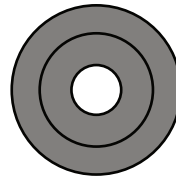
B58



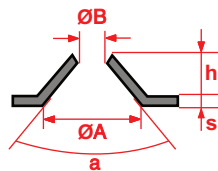
B59



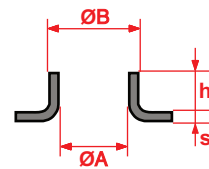
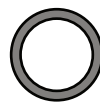
B60



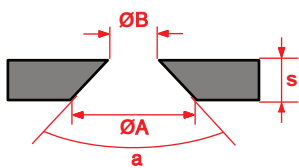
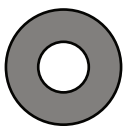
B61



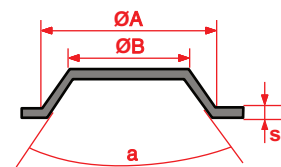
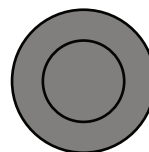
B62



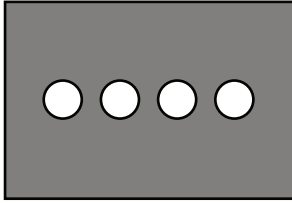
B63



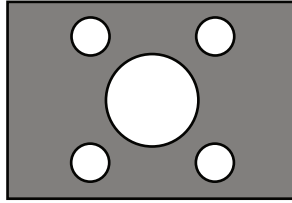
B64



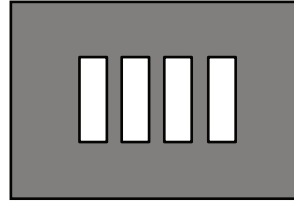
B65



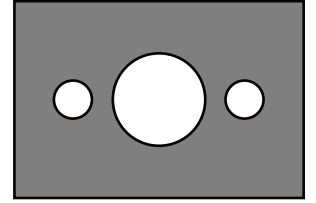
B100



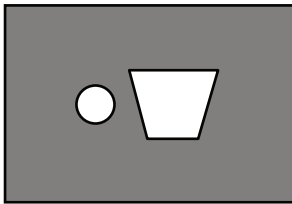
B101



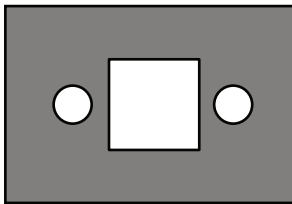
B102



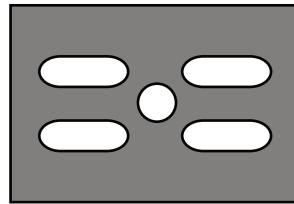
B103



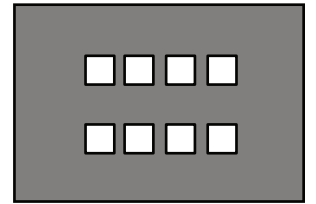
B104



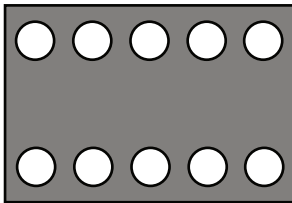
B105



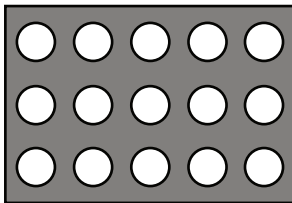
B106



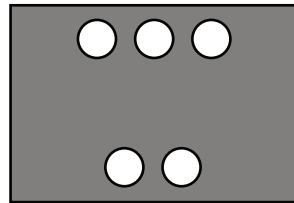
B107



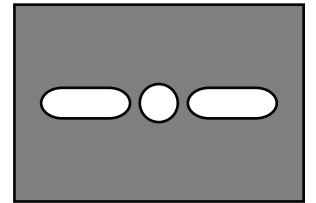
B108



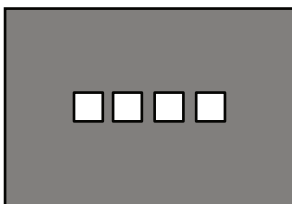
B109



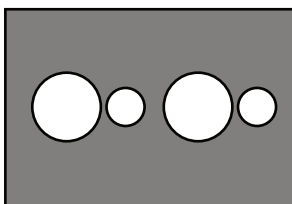
B110



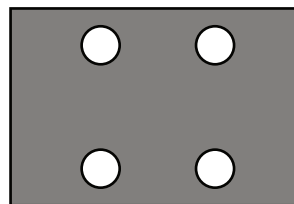
B111



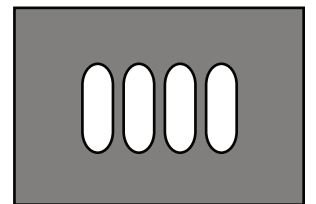
B112



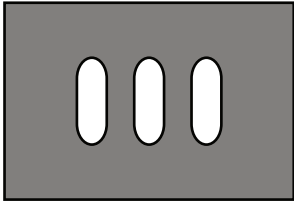
B113



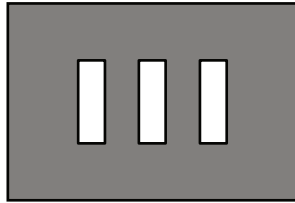
B114



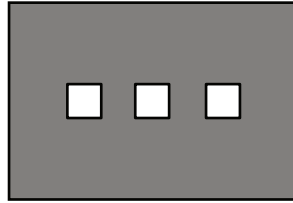
B115



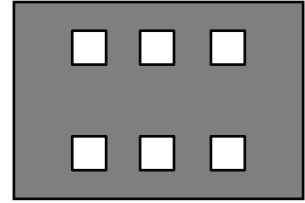
B116



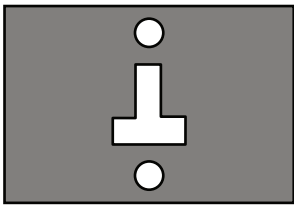
B117



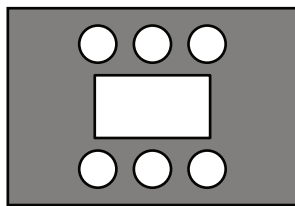
B118



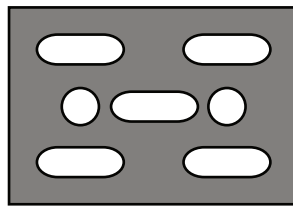
B119



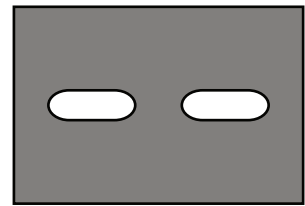
B120



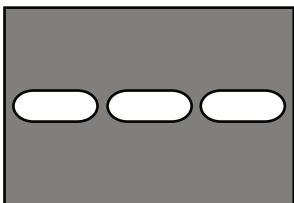
B121



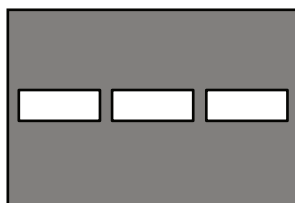
B122



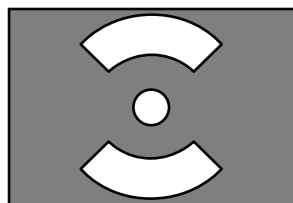
B123



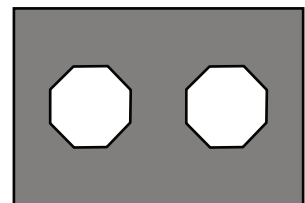
B124



B125



B126



B127

TOLERANCIAS (mm) entre PUNZÓN y MATRIZ

CLEARANCE (mm) between PUNCH & DIE

Espesores en mm. Thickness in mm	Hierro / Fe Mild Steel		Ac. Inox Stainless Steel		Aluminio Aluminium		Cobre / Latón Copper / Brass	
	Tolerancia Clearance	R	Tolerancia Clearance	R	Tolerancia Clearance	R	Tolerancia Clearance	R
0,5 - 0,6	0,08 - 0,10	0,10	0,10 - 0,12	0,12	0,06 - 0,08	0,08	0,05 - 0,06	0,06
0,8	0,14 - 0,15	0,15	0,15 - 0,20	0,20	0,10 - 0,14	0,10	0,08 - 0,10	0,08
1,0	0,16 - 0,20	0,20	0,18 - 0,24	0,24	0,12 - 0,16	0,14	0,10 - 0,14	0,12
1,2	0,20 - 0,24	0,24	0,25 - 0,30	0,26	0,15 - 0,20	0,16	0,12 - 0,15	0,14
1,5	0,25 - 0,30	0,30	0,27 - 0,35	0,34	0,18 - 0,24	0,22	0,15 - 0,20	0,18
2,0	0,34 - 0,40	0,40	0,36 - 0,45	0,45	0,24 - 0,30	0,26	0,20 - 0,25	0,24
2,5	0,45 - 0,50	0,50	0,46 - 0,55	0,55	0,32 - 0,35	0,35	0,25 - 0,30	0,28
3,0	0,50 - 0,60	0,60	0,60 - 0,70	0,65	0,35 - 0,45	0,40	0,30 - 0,40	0,36
4,0	0,65 - 0,80	0,80	0,70 - 0,95	0,90	0,45 - 0,60	0,55	0,40 - 0,50	0,48
5,0	0,85 - 1,00	1,00	0,90 - 1,15	1,10	0,60 - 0,80	0,70	0,55 - 0,65	0,60
6,0	0,95 - 1,20	1,20	1,10 - 1,40	1,35	0,75 - 0,95	0,85	0,70 - 0,85	0,72

R Recomendable
Recommended

RESISTENCIA AL CORTE TENSILE STRENGTH

Kg x mm²

Hierro Fe Mild Steel	Hierro Fe Mild Steel	Acero Inox. Stainless Steel	Aluminio Aluminium	Cobre Copper	Latón Brass
40 (0,1 % C)	50 (0,2 % C)	70	20	32	40

FÓRMULA PARA EL CÁLCULO DE TONELAJE (T)
TONNAGE CALCULATION FORMULA (T)

$$\frac{P \cdot n \cdot t \cdot R_c}{1000}$$

P = Perímetro (mm)
Perimeter (mm)

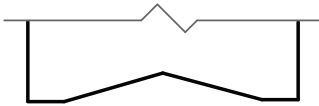
n = Número de punzones
Number of punches

t = Espesor de chapa (mm)
Sheet Thickness (mm)

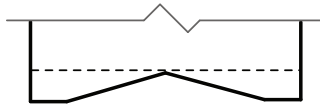
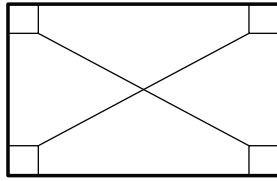
Rc = Resistencia al Corte (Kg/mm²)
Tensile strength (Kg/mm²)

Rectificado de Punzón

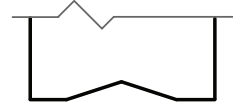
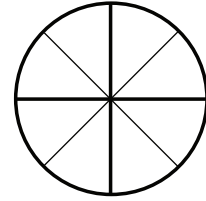
A



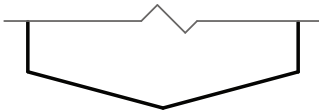
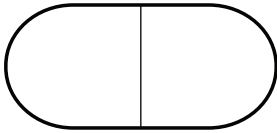
B



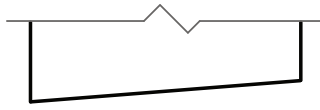
C



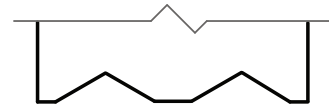
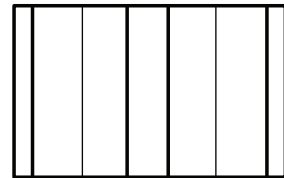
D



E

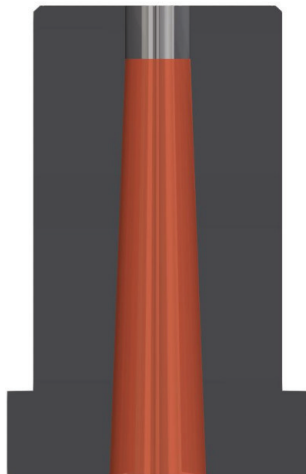


F



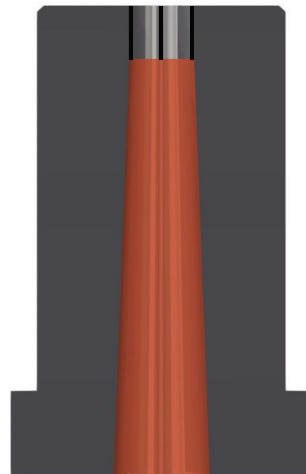
Tipo de Matriz

RR

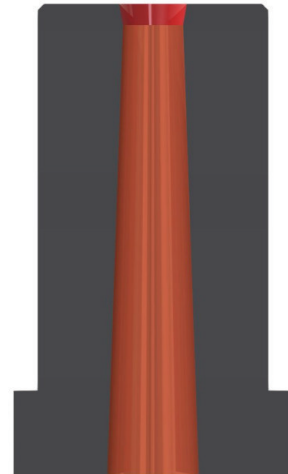


Matriz Estándar

R2C



Matriz de Retención por Filamentos



Matriz de Retención por Dos Conos



DUR-TiN

- COLOR / COLOR: Amarillo oro / Yellow gold
- APLICACIONES / APPLICATIONS: General / General
- PROPIEDADES / PROPERTIES: Reduce el desgaste por abrasión y adhesión.
Reduces wear by abrasion and accession.

DUR-ALUM

- COLOR / COLOUR: Gris negro / Black grey
- APLICACIONES / APPLICATIONS: Aluminios, latón y derivados / Aluminium, brass and derivative
- PROPIEDADES / PROPERTIES: Reduce el desgaste por adhesión.
Reduces wear by accession.
Bajo coeficiente de fricción.
Low coefficient of friction.
Buenas propiedades de deslizamiento.
Good slip properties.

DUR-INOX

- COLOR / COLOUR: Gris violeta / Purple grey
- APLICACIONES / APPLICATIONS: Fe, galvanizados, Ac. inoxidable / Fe, Fe. galvanized and stainless steel
- PROPIEDADES / PROPERTIES: Relación optimizada entre dureza y tensión residual compresiva.
Optimized ratio between hardness and compressive residual stress.
Desgaste uniforme.
Uniform wear.
Buenas propiedades de deslizamiento.
Good slip properties.

DUR-EXTREM

- COLOR / COLOUR: Gris azulado / Bluish grey
- APLICACIONES / APPLICATIONS: General; recomendado para Ac. Inoxidable.
General; recommended to stainless steel.
- PROPIEDADES / PROPERTIES: Resistencia al desgaste muy elevada y excelente dureza en caliente.
Very high wear resistance and excellent hot hardness.
Muy buena estabilidad al choque térmico.
Very good stability to thermal shock.
Velocidad de corte notablemente más altas.
Higher cutting speed.

DUR-EXTREM PLUS

- COLOR / COLOUR: Cromo / Chrome
- APLICACIONES / APPLICATIONS: General; especialmente indicado para Ac. Inoxidable.
General; especially suitable to stainless steel.
- PROPIEDADES / PROPERTIES: La mayor dureza superficial.
The higher surface hardness.
Menor tendencia al calor.
Less heat tendency.
Mayor protección especialmente en los bordes contra el inicio y propagación de grietas.
Increased protection especially in the edges against the beginning and propagation of cracks.
Puede prolongar la vida útil del punzón hasta un 100%
Can explode punch life up to 100%.

AFILADO DE LOS PUNZONES

Como norma general, no se debería permitir que los punzones llegasen a necesitar un afilado mayor de 0,10 mm. Y sería óptimo rectificar en pasadas suaves (Z) de entre 0,01 y 0,02 mm. Estos parámetros indicarían un correcto mantenimiento de los punzones.

Para punzones con recubrimientos especiales: DUR-TiN, DUR-ALUM, DUR-INOX, DUR-EXTREM y DUR-EXTREM PLUS emplear los mismos indicadores; y dependiendo de la máquina que se utilice, rectificar con las más altas revoluciones de muela posibles y con avances entre 2.500 y 4.000 mm/min.

Una vez hecho el afilado del punzón, comprobar que la zona perimetral del corte ha quedado completamente limpia y no presenta gripado por adhesión de partículas del material punzonado, en caso de estas, limpiar esa zona con papel de lija fino hasta dejarla pulida.

SHARPENED OF PUNCHES

As general norm, it's not recommended sharpening punches more than 0,10mm. The correct form to sharp is doing it with smooth feeds (z) about 0,01 and 0,02mm. It will be the correct maintenance of the punches.

For punches with special coatings: DUR-TiN, DUR-ALUM, DUR-INOX, DUR-EXTREM and DUR-EXTREM PLUS, use the same indicators; using the highest revolutions of the grinding wheel for shapening, with feed rates between 2.500 and 4.000 mm/min.

Once realised the sharpened of the punch, verify that the peripheral zone of the cut is completely clean and if it's necessary polish the surface with a lightly stone.

Important: to avoid the heating of the pieces during the sharpening, always use a suitable coolant.

AFILADO DE MATRICES

Manteniendo las matrices en corte vivo, alargará la vida de los punzones, pues éstos no tendrán que embutir la chapa antes de ser cortada, se evitarán rebabas, ruido excesivo y se dejará una calidad correcta en el corte.

Sirven los mismos parámetros de muela, avances y pasadas tanto en el punzón como en la matriz; y antes de dar por bueno el afilado de la matriz, comprobar que en la parte interior del perímetro de corte, no han quedado restos de partículas de chapa adheridas, que vayan a friccionar con el puzón al iniciar de nuevo el trabajo.

Evitar el calentamiento de las piezas, usando siempre un refrigerante adecuado o taladrinas.

La energía producida por la fricción de la muela con los aceros, hará que estos hayan quedado ligeramente imantados; desmagnetizar las herramientas antes de iniciar el trabajo.

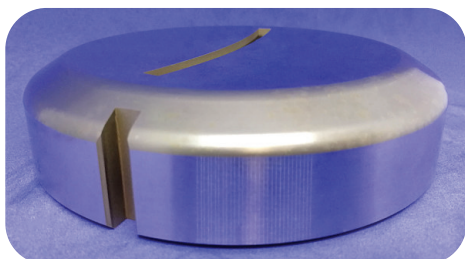
SHARPENED OF DIES

The correct maintenance of the dies will extend the life of punches, because these will not emboss the sheet before being cut, it will avoid burrs and excessive noise, and it give a correct quality of the cut.

For sharpening dies used the same procedures that with punches, feed rates and griding wheel, verify that the cut zone is completely clean of burrs and if it is necessary polish it to assure the correct work of the punch.

To avoid the heating of the pieces, always use a suitable coolant.

Demagnetize the resharpened tools before to start works.



Servicio y Reparación

El servicio de reparación y ajuste de TC consiste en la comprobación, reparación, ajuste o modificación de cualquier componente fijo, móvil y/o accesorios de todo tipo de grupos de punzonado, matricería e incluso componentes de máquina sin importar marca y modelo.

Comprobación

Revisión de todos los elementos, comprobación de los mismos (medidas, chavetas, tornillo, etc.)

Reparación

Sustitución de cualquier elemento que interfiera en el buen funcionamiento del grupo, tanto por desgaste como por rotura.

Ajuste

Ajustamos los grupos para su correcto funcionamiento modificando alturas, recorridos, etc.

Modificación

Estudiamos la posibilidad de modificaciones y cambios en grupos de punzonado y matricería, realizando elementos nuevos y/o modificando los ya existentes.

Service & Repair

Tc's adjustment and repair consist of checking, repairing, adjusting, or modifying any fixed and mobile component and / or accessories of all types of punch groups, dies and even machine components of all brands.

Verification

Review all elements, checking them (measurements, keys, screws, ...).

Repair

Replacement of any element that interferes with the proper fuction of group for breakage and / or attrition.

Adjustement

We adjust the groups for their correct operation by modifying heights, courses, ...

Modification

We study the possibility of modifications and changes of punch groups and tooling, making new elements and / or modifying existing ones.





Solutions for Metalworking

www.tcpunzones.com

Trumpf® system

Thick Turret system

Goiti® - Danobat® system

Euromac® system

Salvagnini® system

Especiales y Accesorios

Plegadora

Láser

Tlf. +34 934 228 023
info@tcpunzones.com

